



Rudyard Kipling Primary School & Nursery

Woodingdean, Brighton

Where learning is an adventure!





Headteacher's Welcome



A very warm welcome to Rudyard Kipling Primary School and Nursery (RKPS), Woodingdean, Brighton.

We possess magnificent outdoor learning spaces, including our own wild Forest School and, with very little traffic nearby, our children enjoy clean sea air. The learning is taken outside at every opportunity: here at RKPS, *Learning is an Adventure!*

We are an academic school-our children enjoy achieving. **Our 2024 Year 6 'SATs' results once again placed us in the top ten performing Brighton and Hove primary schools.** Indeed, our reading results are the highest in the city. **96% of our children reached the expected standard in reading, the highest in the city.**

We hold high expectations for all our learners. First class teaching ensures that all our children become capable learners in the core subjects of maths, reading, writing, science, computing and PE: we lay the

academic stepping stones for your child's future success.

We are a friendly, diverse and inclusive community: nurture is at the heart of all that we do.

A strong sporting culture is embedded here at RKPS, our children are provided with myriad opportunities to take part in different sports, to represent the school in events. We believe that academic and sporting achievement go hand in hand.

A rich, rigorous and creative curriculum runs through RKPS: our children are actors, scientists, historians, artists and coders! Our children perform plays on our indoor and outside stages - we have first class facilities here at RKPS.

We offer a wide range of free clubs for all from chess, to Lego to cricket. Here at RKPS, no child is left behind. You will not realise just how wonderful a school we are until you come and visit so please book a tour

and see for yourself – I look forward to showing you around soon.

Euan Hanington

Euan Hanington – Headteacher



An academic school; A creative school



We are an academic school.

The high expectations of our dedicated and talented teaching staff ensure that every child fulfils their potential as they discover their own individual pathways to success. Mathematics, reading, writing, science, computing and PE form the bedrock of our curriculum. Challenge is a feature of every lesson with our children taught to become accomplished with both numbers and words.

Our children are taught the knowledge and the skills to enable them to become successful learners in primary school and beyond.

RKPS children are challenged to be the very best learners they can be: our growth mindset approach to teaching and learning enables children to develop strong learning behaviours. Our children are resilient, confident and have high aspiration.

Our classes are named after inspirational people from the past and present: from Neil Armstrong to David Attenborough to Frida Kahlo. RKPS children are ambitious and we equip them with the academic tools to become successful in the years that lie ahead of them.

A creative curriculum drives the learning here at RKPS. Our children are taught a love of the arts and are given opportunities to become confident artists, actors and musicians.

Our Nursery and Reception Classes



Learning is magical in EYFS!

We have a first class teacher-led Nursery as part of our Early Years Foundation Stage. This includes both a two to three year old room and three to four year old Pre-School, plus our Reception cohort. Our Nursery offers our children a smooth and gentle transition into Reception.

Throughout the Early Years, we provide a nurturing, rich and stimulating learning environment to promote children's curiosity and autonomy. We deliver a creative curriculum where every child is inspired to explore, investigate and learn through fun hands-on experiences.

Our spacious, green outside learning garden offers discovery and learning on a larger scale making the most of nature and natural resources. It supports the enrichment of communication and language, also the development of children's understanding of their world through sensory experiences: with a

nature kitchen, planting beds for growing, areas of insect friendly flora and mini beast habitats, including a Bug Hotel. Nursery and Reception classes also have the use of the school's amazing wildlife area.

Throughout Early Years, we value and appreciate working in close partnership with our families. Teachers meet and greet daily; we share your child's learning through 'Evidence Me' (an online portal), offer workshops and guidance to enable parents and carers to feel both informed and involved in their children's development.

Furthermore, we offer opportunities for children to proudly share and celebrate their learning with families.

In EYFS, our children grow into happy, inquisitive and resilient learners. They feel comfortable to share their thoughts, 'have a go' at new learning and seek a challenge. We wish for our children to create many magical, memorable moments and develop key characteristics of learning that will support them throughout school and equip them for life.

A Community School



A Woodingdean School

Our school is at the heart of the Woodingdean community.

RKPS participates in local events such as the Woodingdean Carnival which this year was held here at RKPS. Our children take part in inter-school sports competitions with other school.

Our whole school community works together to help support all Woodingdean families.

A Brighton and Hove School

Every year, we are proud to participate in the Brighton Festival Children's Parade and also perform at the Let's Dance Festival at the Brighton Dome. Our school choir sings at the Brighton Centre Schools Christmas Concert as well as at other venues. RKPS supports local charities at our fund raising events and through food donations at Harvest Festival.

We are proudly a Brighton and Hove school and we participate in numerous events over the academic year, including beach walks, theatre visits and for swimming lessons.

“ The school looks after the wellbeing of the children and puts their feelings first. ”

Year 1 parent

Parents, Teachers and Friends



Our Amazing PTFA!

We are fortunate to have an amazing Parents, Teachers and Friends Association (PTFA). Anyone in the school community can take part in our fun events which include: Christmas parties, raffles, Easter, Halloween/Christmas trails, film nights and magic shows. We even have a fantastic Kipling Cafe! Many of our events are open to families from the whole of Brighton and Hove. Our PTFA raise a lot of money, all of which goes towards enriching our children's everyday school experiences.

Many of the wonderful features in our playgrounds came courtesy of the fund raising efforts of the PTFA including our new super slide, Crinklecrag climbing frame and 'You Are Amazing!' mural.

Amongst many other initiatives, in recent times our PTFA has also funded the sound and lighting for our professional theatrical stage, a new RKPS football team kit and re-landscaped our EYFS outdoor area – it is amazing.

Our PTFA would not be as successful without its dedicated army of volunteers. It's a great way to be creative, get to know the school and other parents. The PTFA always need help, any amount of help big or small is gratefully received, so please do get involved.

Enjoying Achieving!



We believe that children learn best when the curriculum is challenging, exciting and relevant. Here at RKPS, children experience awe and wonder on a daily basis: we make the learning magical! Drama for writing is a key part of our curriculum and regular dress up days are fun and always enjoyed by our children.

Learning Behaviours & 'Special Mentions' Assemblies

We are a research driven school and recognise the importance of teaching children the metacognition techniques which will enable them to become successful learners.

We have our own RKPS 5 'R's:

*Readiness,
Remembering,
Resourcefulness,
Reflectiveness
Resilience.*

These learning behaviours help our children succeed in their learning and enable them to achieve their best.

Children who have demonstrated an outstanding use of a learning behaviour might receive a certificate in our weekly 'Special Mentions' assemblies. These are memorable events which parents and carers are invited to attend.

“ The teachers and staff are kind, caring and approachable. ”

Year R parent

A Creative Curriculum

Our teachers' creative planning ensure an exciting and cross-curricular approach to teaching and learning. Wherever possible, many areas of the curriculum are taught through termly topics which ensure that the learning is meaningful and children have opportunities to practise skills in context.

Parents and carers are invited to termly 'Topic Chats' where teachers share an overview of what the children will be learning; these also provide an opportunity to ask questions and see our stimulating classroom learning environments.

We believe that children learn best when provided with frequent opportunities to discuss their learning: children might do this in groups or with a learning partner. Talking for learning is a crucial part of the curriculum at RKPS.

Reading

We have a proud reading community here at RKPS. Our jungle themed library greets you when you walk through the door and our children enjoy new books from diverse and current authors.

Music

Children are provided opportunities to learn musical instruments at RKPS including violin, guitar and keyboard. In Year 5, all children have the opportunity to learn to play a musical instrument and perform as a group to the school and their parents and carers.



Mathematics, Reading And Writing



Mathematics

We teach our children to love maths here at RKPS. A rich and varied mathematical curriculum teaches our young mathematicians the core maths skills, embedding a solid understanding of number and shape.

Maths is always given a real life context and made practical: problem solving activities run through the curriculum. Children are provided with the apparatus to help them become confident mathematicians, collaborating with other children to achieve success.

Half-termly maths competitions encourage children to develop their fluency and rapid recall of mathematical facts and times table challenges with Wilfie the Wolf a firm favourite with the children! Times Table Rockstars is enjoyed by the whole school to make the learning of times table facts engaging.

Writing

We are an associate school for the 'Power of Reading' approach to teaching writing. This creative and effective approach increases children's engagement and attainment, which puts high quality children's literature at the heart of all learning.

Throughout the school, children take pride in their writing. Writing assemblies are an opportunity to share their work with the rest of the school. We also celebrate writing through 'publishing' the children's work as: books, poetry anthologies, news clips or performances: developing editing and presentation skills each time. Children's work can be read and enjoyed in our new school library and in class reading areas – the writing feeds directly into reading.

Outdoor Learning and Forest School



We take the learning outside at every opportunity: we have magnificent outside spaces including our own special Forest School. Our children are given myriad experiences to learn in nature with science, maths, English and other lessons often taking place in the fresh air. We recognise the power of learning in the outdoors.

All our children have regular Forest School sessions: roasting marshmallows on the fire pit and investigating in our magical pond.

Using the curiosity approach to learning, our children are encouraged to explore and problem solve in the outdoor environment as much as possible. Classes are given opportunities to grow their own fruit and vegetables: our EYFS children have beautiful new vegetable gardens where they plant and grow and learn how to live off the land!

Here at RKPS, learning is an adventure.

“ The free clubs are fantastic! ” Year 4 parent

Sport/Sports Days



We have a well embedded sporting culture at RKPS, believing that a love of exercise is something that benefits a child for life. Our young sportswomen and men are given numerous opportunities to improve their skills across a variety of sports.

Some of our free after school clubs include netball, cricket and football: these are very popular.

Our RKPS girls' and boys' football teams compete against other schools – our children are proud to wear the school colours! Our children take part in many sports including hockey, tennis, cricket, netball and athletics. Annually, we take part in the Brighton and Hove athletics meet at Withdean Athletics Track.

Swimming is a very popular activity here at RKPS: our Year 3, 4 and 5 children improve their swimming skills at a local Brighton swimming pool.

The summer term sees year groups take part in their Sports Days where children have the chance to compete against other children within their year group. These events always end with the traditional parent/carer races which are always fun!

“ My children have thrived at Rudyard and we are really pleased with their progress.
Year 2 and 5 parent ”

Inclusion and School Dogs



Hugo the Therapy Dog!

Hugo is very much part of the fabric of our school: indeed, he is one of our most popular members of staff! Hugo is friendly and loves to meet new people. He loves to help children feel better when they are sad or upset. Hugo also likes to hear stories read to him by the children, especially those who may feel shy reading to adults.

Research has demonstrated that therapy dogs, properly managed in the school setting, can make a huge difference in helping children improve their academic skills, but also in contributing to their social and emotional development. Hugo is a star!

Inclusion

We are a highly inclusive, nurturing and supportive school: nurture is at the heart of all that we do. Our dedicated Inclusion team are passionate about improving children and families' life chances: this is achieved through our comprehensive support programme. Neurodiversity in our school community is celebrated and **we celebrate diversity and equality**; we have a fantastic team of staff who promote a kind and caring environment for all our learners. We are committed to every child reaching their full potential and do our utmost to break down any barriers to learning.

We are dedicated to raising standards for all our children: those with additional needs also make excellent progress, acquiring the necessary skills ready for secondary school and beyond.

“Great sporting events and trips!”

Year 6 parent

Wrap Around Care, Clubs and Residential



Breakfast and After School Club

We recognise the busy lives which parents and carers lead and offer a breakfast club from 7:30am. Here, children are offered a selection of healthy food choices to eat and drink, as well as a range of supervised activities each day to keep them busy before the school day begins.

Throughout the year, we run a popular daily After School Club. This runs from 3:15pm to 5:30pm, Monday to Friday. Children enjoy many fun activities including art and outside sport.

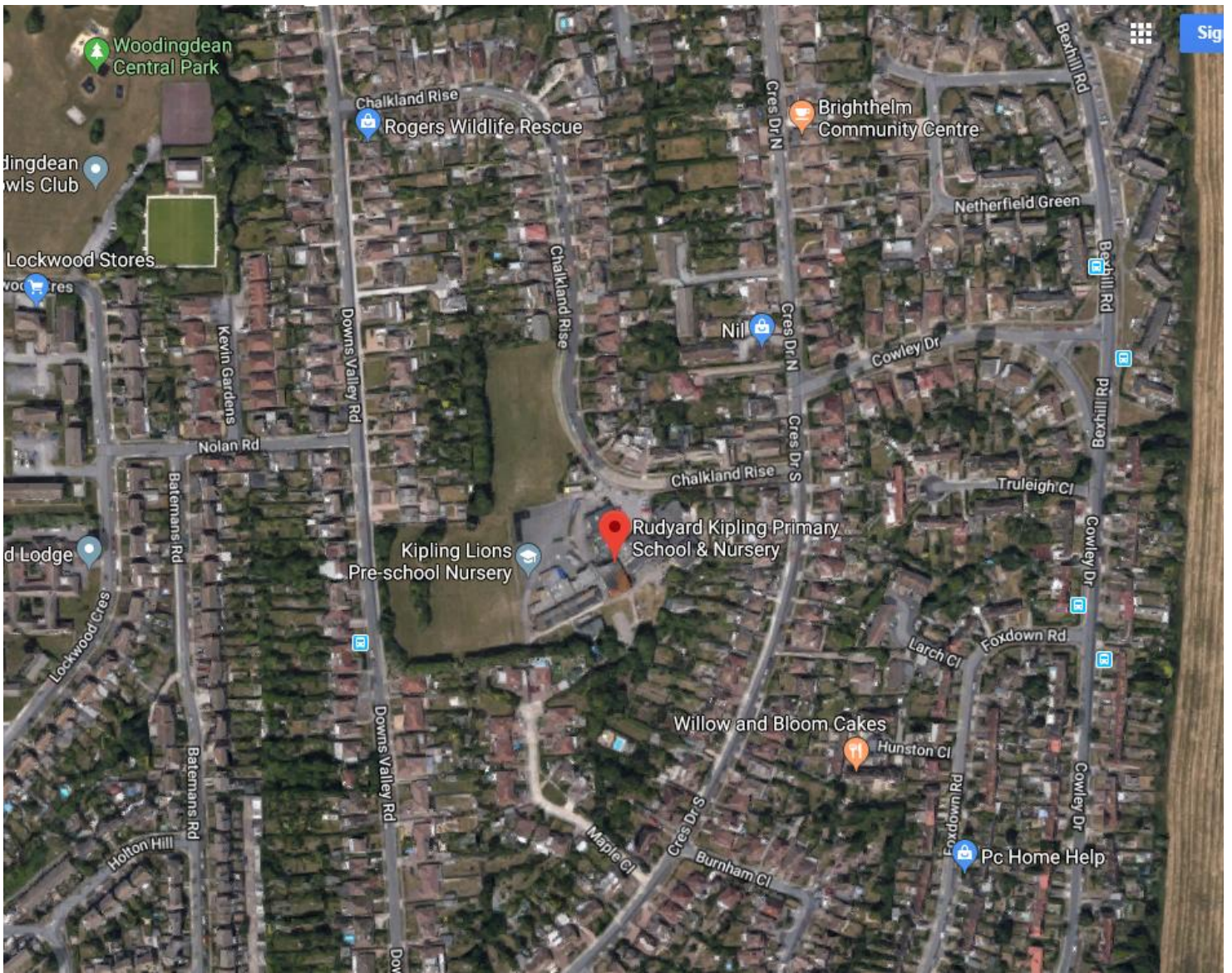
School Clubs and Year 6 Residential

We offer a variety of free school clubs for our children to enjoy. Our dedicated teaching team share their own passions offering the children a selection of free, inclusive and enjoyable clubs. These include Lego, art, dance, cricket and netball.

Some external providers also use our first class facilities to offer our children further opportunities, although these incur a charge. These include skateboarding, street dance and karate.

In the Summer Term, our Year 6 children have the opportunity to attend the residential. Here they take part in adventurous outdoor pursuits as an extension to the school curriculum. These include: rafting, orienteering, archery and abseiling. The Year 6 residential is also an opportunity for some children to experience being away from home for the very first time and make lifelong memories with their friends.





Rudyard Kipling Primary School & Nursery, Woodingdean
Chalkland Rise, Woodingdean, Brighton, BN2 6RH
Headteacher: Euan Hanington

Telephone: (01273) 303328

Email: admin@kipling.brighton-hove.sch.uk

Website: www.rudyardkiplingprimary.co.uk

Follow us now on:



@rudyardkiplingprimaryschool

