



RUDYARD KIPLING

Primary School & Nursery,
Woodingdean

Year 5 Meet the Teacher Summer Term



Miss Hay
Year 5 Teacher



Mrs Woolven
Learning Support
Assistant / After
School Club



Mrs Borg
Learning Support
Assistant



Miss Stokes
Year 5 Teacher P/T

Physical Education – Cricket, Athletics and Team building

- Develop competence to excel in a broad range of physical activities.
- Engage in competitive sports and activities.
- Use running, jumping, throwing and catching in isolation and in combination.
- Play competitive games, modified where appropriate.
- Take part in outdoor and adventurous activity challenges both individually and within a team.

Science

- ❖ **Animals including Humans**
 - Understand the differences between Insects, Mammals, Birds and Amphibians.
 - Learn about the similarities and differences in life cycles.
 - Explore metamorphosis
- ❖ **Living things and their habitats**
 - Describe the life process of reproduction in some plants.
 - Understand the steps in; Pollination, Fertilisation, Germination, and Seed disposal.

Religious Education

- ❖ **Buddhism**
 - Find out who Buddha was
 - Learn some core Buddhist beliefs and teachings
 - Learn where Buddhists worship
 - Learn about the four noble truths, the eightfold path, karma and rebirth
- ❖ **Belief in our Community**
 - Learn about different religious and non-religious beliefs in our community
 - Find out the impact faith and belief have had on inspirational figures
 - To think about what makes it difficult to live life according to our own beliefs.

Art & Design

- ❖ Exploring Greek art including pottery.
- ❖ Create tonal drawings of the Parthenon
- ❖ Exploring scratching art
- ❖ Designing and creating a Greek inspired clay pot.
- ❖

Music

- ❖ Chanting/Repetition
- ❖ Create rhythmic chants or percussion compositions that could accompany a festival or Olympic celebration

Maths

- ❖ **Area, Perimeter and measurements**
 - Finding the Perimeter of rectilinear shapes and regular polygons.
 - Calculating Area of compound shapes
 - Calculating volume
- ❖ **Statistics**
 - Interpreting line graphs
 - Interpreting tables
 - Plotting co-ordinates
- ❖ **Geometry**
 - Calculating the angles in a shape.
 - Measuring angles in a shape.
- ❖ **Negative Number**
- ❖ **Volume**



Ancient Greece. Year 5

English – Power of Reading

- ❖ **The Adventures of Odysseus – Hugh Lupton & Daniel Morden**
 - Identify and discuss themes in reading
 - Prepare and perform play scripts.
 - Discuss and evaluate how authors use language.
 - Reading aloud and rereading
 - Writing in role
 - Visualising
 - Shared writing
- ❖ **The Promise – Nicola Davies & Laura Cartin**
 - Engage children with a story with which they will empathise
 - Explore themes and issues, and develop and sustain ideas through discussion
 - Develop creative responses to the text through drama, storytelling and artwork
 - Explore and develop empathy for characters
 - Write with confidence for real purposes and audiences
 - Free writing opportunities

Geography

- ❖ Identify and describe the geographical structure of Greece
- ❖ Compare and contrast the geographical structure of Greece to our local area
- ❖ Learn about the physical geography of Greece, including climate, biomes and vegetation, rivers, mountains and volcanoes
- ❖ Describe how locations around the world are changing and explain some of the reasons for change.
- ❖ Analyse and give views on the effectiveness of different geographical representations of a location.
- ❖ Create maps of locations identifying patterns (such as: land use, climate zones, population densities, height of land).

History

- ❖ Learning about Ancient Greece and Greek ideas/inventions – including:
 - The Trojan war
 - Gods and goddesses and Greek mythology
 - Greek Theatres
 - Famous Greek buildings
 - The Olympics
 - Athens v Sparta
 - Democracy

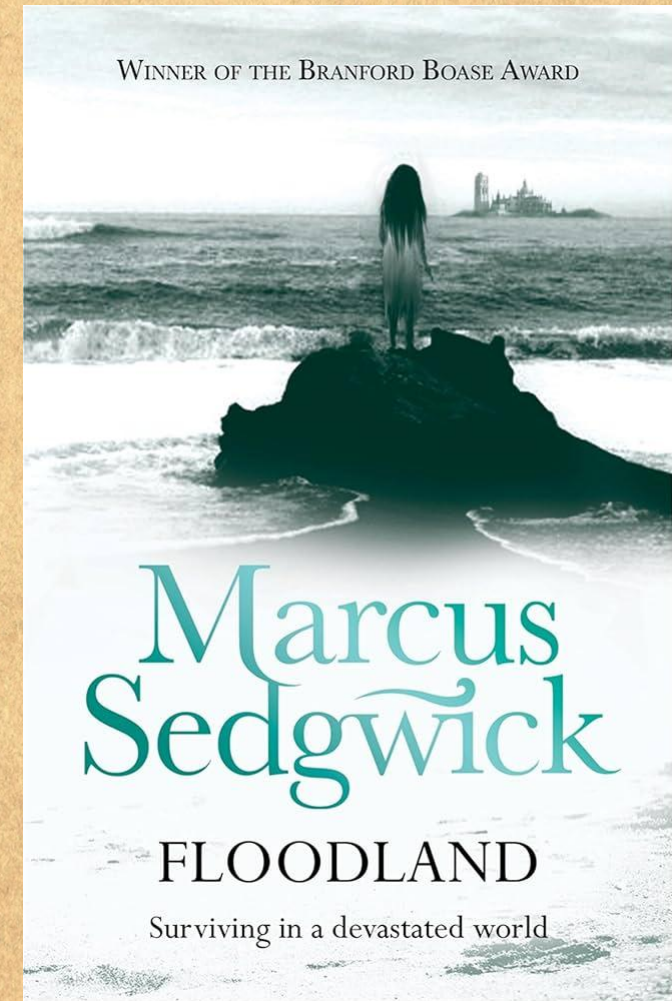
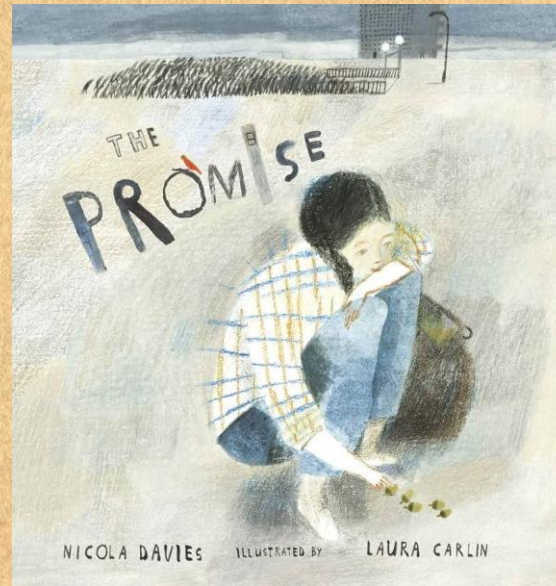
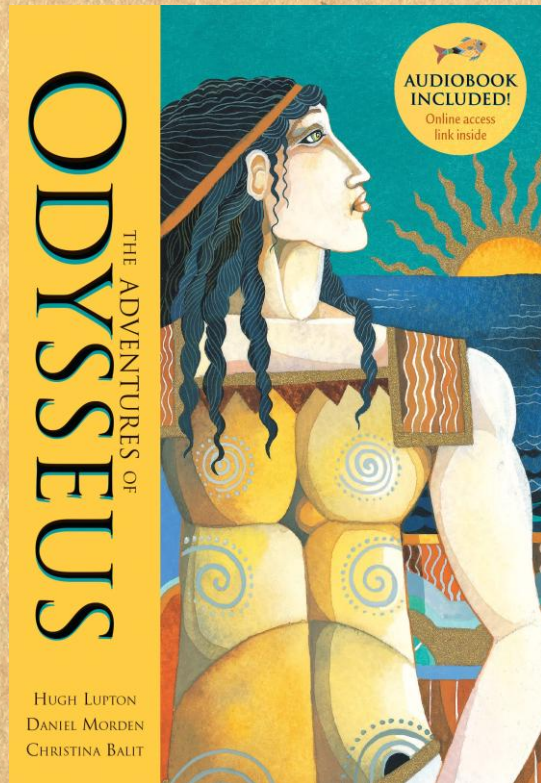
PHSE

- ❖ **Changes**
 - To learn different strategies to cope with change
 - To find the positives in
- ❖ **Relationships and Sex Education (RSE)**
 - To recognise that increasing independence brings increased responsibility to keep themselves and others safe
 - How bodies will change as they approach and move through puberty
 - To recognise how images in the media do not always reflect reality and can affect how people feel about themselves
 - To develop the skills to recognise and challenge inequality, prejudice, stereotyping and injustice including bullying, racism, sexism, homophobia, biphobia and transphobia.

Design and Technology

- ❖ Use research and develop design criteria to inform the design of innovative, functional, appealing products that are fit for purpose, aimed at particular individuals or groups
- ❖ Generate, develop, model and communicate their ideas through discussion, annotated sketches, cross-sectional and exploded diagrams, prototypes, pattern pieces and computer-aided design
- ❖ Use a wider range of tools and equipment to perform practical tasks.
- ❖ Apply their understanding of how to strengthen, stiffen and reinforce structures

English



Maths

Geometry

Shape

VIEW

Geometry

**Position and
direction**

VIEW

Number

Decimals

VIEW

Number
Negative numbers

VIEW

Measurement

**Converting
units**

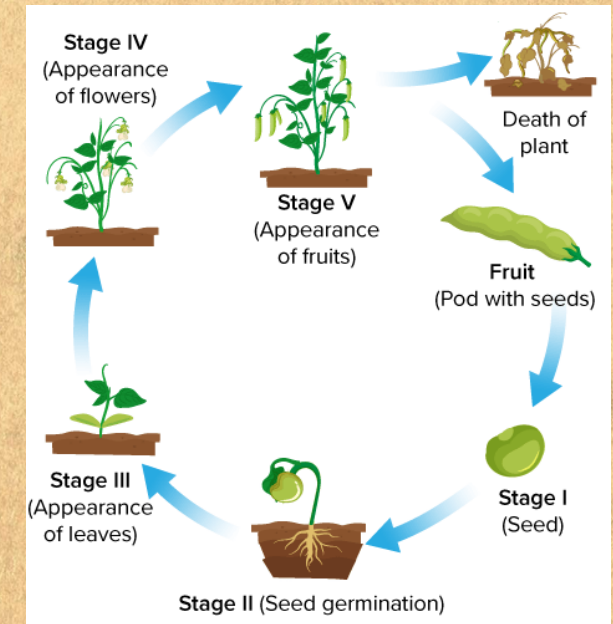
VIEW

Measurement
Volume

VIEW

Science : Plants and life cycles

In Year 5 science, we are learning about plants and their life cycles. We are exploring how plants grow from seeds and what they need to survive, such as water, light, air, and nutrients. We are learning about the different stages of a plant's life cycle, from seed to seedling to a fully grown plant, and how pollination happens with the help of insects like bees. We are also comparing plant life cycles with animal life cycles to understand how all living things grow and change.



History and Geography

Ancient Greece and Greece

In Year 5, learning about Ancient Greece is like stepping into a world of gods, heroes, and powerful city-states! Students explore places like Athens and Sparta, discovering how people lived, fought, and even invented one of the first forms of democracy. They dive into exciting myths about Zeus, Athena, and Hercules, and learn how the Ancient Greeks shaped things we still use today—like the Olympics, theatre, and philosophy. It's a fun journey that shows how this ancient civilization still influences our lives now!



PE

- **PE Days:**

Seacole: Monday

Darwin: Tuesday

- Cricket
- Athletics

All children need to have a PE kit. This is made up of the school navy PE t-shirt, dark shorts or navy joggers and plimsolls/trainers. However your children are welcome to wear a plain navy t-shirt. Make sure trainers are comfortable.



Meal Manager

- Have a look at our menu for the Spring Term.
- We suggest sitting down and highlighting the meals that you like, and then on the days that there's nothing to take your fancy, bring in a packed lunch.
- Don't forget we are a nut-free school 😊



Rudyard Kipling Primary School & Nursery Our School Uniform



Our school uniform is available on our Website and is:

- Plain grey skirt, pinafore dress, grey smart tailored trousers
- Navy sweatshirt, fleece with school logo - available from school
- Navy polo shirt with logo - available from school
- Securely fastening black or navy shoes
-Velcro fastenings only in Reception Class



In warmer weather the following may be worn:

- Navy & white striped or checked dress
- Plain grey tailored shorts
- Secure fastening sandals

We kindly ask all children wear the school uniform

This is not only practical but it also helps children develop a pride in their appearance and in the unity of the school. However, your children are welcome to wear a plain navy polo shirt.



P.E.

All children need to have a PE kit. This is made up of the school navy PE t-shirt, dark shorts or navy joggers and plimsolls/trainers. However your children are welcome to wear a plain navy t-shirt.

All clothes and possessions should be carefully marked with the child's full name- permanent marker pens are perfect or see Stikins label flyer on our website.

<https://www.rudyardkiplingprimary.co.uk/assets/Documents/Attachments/School-Uniform-Code-2024-v3.pdf>

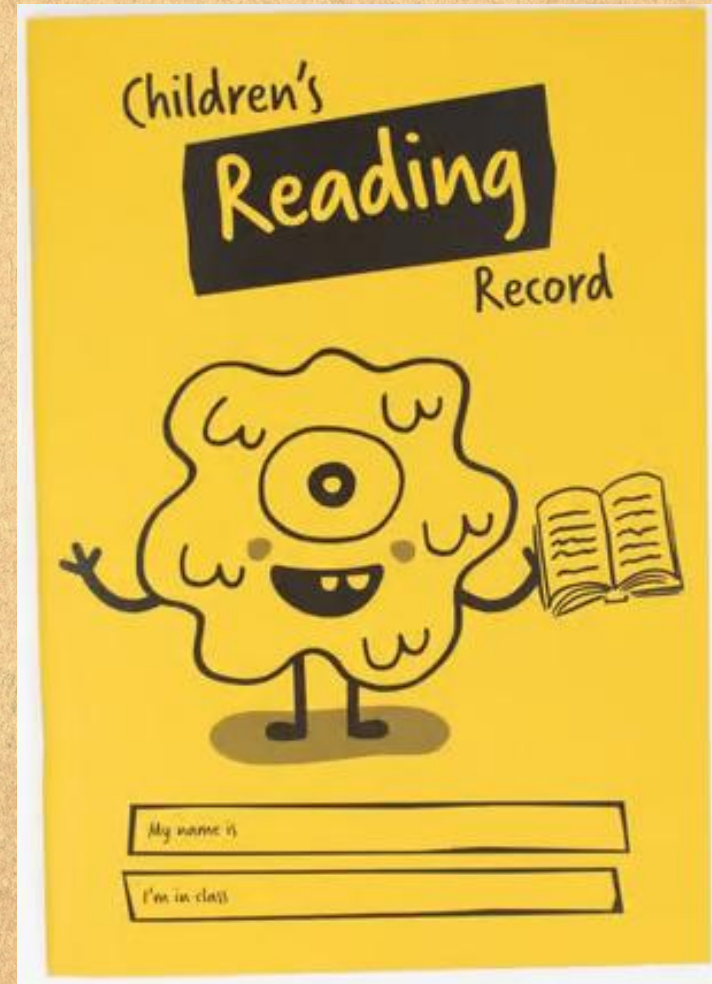
Rock up and Read & Special Mentions Assembly

- Friday morning 0840-0900
- Special Mentions: Text sent out a week in advance to invite you along to the **following Friday.**
- Star Badges and Maths Mission certificates also given on Friday



Reading - Home

- Reading for pleasure. 😊
- Read at home 3 times a week
- Record this in your reading record.
- Raffle ticket drawn in special mentions assembly every Friday.
- Reading suggestions on home support sheet 😊



Times Tables

- When children can recall their times tables, they become more confident, which can help them tackle more challenging math problems.
- Please continue to practise these at home to secure them



Spelling Shed

- You can download the app (for a small cost).
- Your child will have a login (paid for by the school)
- Fun interactive ways of learning tricky spellings.



Communication

- Rudyard Kipling Primary School and Nursery Newsletter.
- Details are available from the office.
- Catchup at the end of the day.



Rudyard Kipling Primary School and Nursery
Newsletter
Where learning is an adventure!

Friday 12th July 2024

Headteacher Reports: Issue 23.24 38

STAY SOCIAL

  @RudyardSchool
 @Rudyardkiplingprimary

Last Saturday's Woodingdean Carnival was once again a super community event. Thank you to everyone who made it along on the day and a special thanks to those who carried our Merbird on the parade. We were honoured to be awarded the Carnival Cup once more: the children were very proud!

Our PTFA stall was as popular as ever as we offered children the opportunity to print their own t-shirts and make slime! Thank you to all the adults who helped out on the stall over the day and a special thanks to Anik and Lou, the driving force behind operations-they are on a serious mission to fund some more fantastic new pieces of playground equipment for all our children to enjoy.

Dates for the Diaries

- **PE Days:**

Seacole: Monday

Darwin: Tuesday

- **Computing Day:**

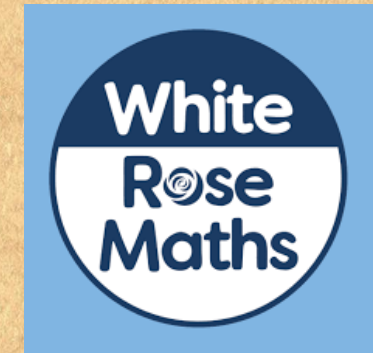
Seacole: Wednesday PM

Darwin: Thursdays PM

- Forest School: Parent helpers

- **Inset - Report writing day - Friday 22nd May**

Home Learning apps



TTRS; Spelling Shed; Google Classroom:
Logins: surnam:@rkps.me
Password: words123

Duolingo; White Rose 1minute maths: Free Apps

