



RUDYARD KIPLING  
Primary School & Nursery,  
Woodingdean



# Meet the Teacher

## Summer Term

Parks Class



Miss Wiseman  
Class Teacher



Mrs Hollingsworth  
Learning Support Assistant



Mrs Manley



Today, we will remind ourselves about:

- Routines, timetables and any other parent/carers information
- Year group, class and home-school learning information
- Key events and dates this term
- Questions at the end



# Rudyard Kipling Primary School & Nursery

## Our School Uniform

The children continue to look so smart - thank you.



Our school uniform is available on our Website and is:

- Plain grey skirt, pinafore dress, grey smart tailored trousers
- Navy sweatshirt, fleece with school logo - available from school
- Navy polo shirt with logo - available from school
- Securely fastening black or navy shoes - Velcro fastenings only in Reception Class

In warmer weather the following may be worn:

- Navy & white striped or checked dress
- Plain grey tailored shorts
- Secure fastening sandals



Now it's getting warmer and sunnier outside...





RUDYARD KIPLING  
Primary School & Nursery,  
Woodingdean

# PE Days



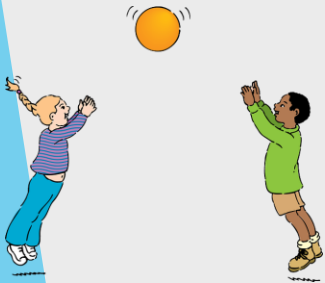
Parks Class's PE days are  
**Thursday and Friday**

## P.E.

All children need to have a PE kit. This is made up of the school navy PE t-shirt, dark shorts or navy joggers and plimsolls/trainers. However your children are welcome to wear a plain navy t-shirt.



All clothes and possessions should be carefully marked with the child's full name- permanent marker pens are perfect or see Stikins label flyer on our website.





RUDYARD KIPLING  
Primary School & Nursery,  
Woodingdean

# Special Mentions

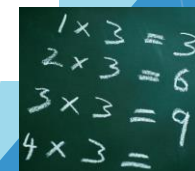


Special Mentions assemblies are every Friday after Rock Up and Read.



You will continue to receive a Ping on the Friday before.

You will continue to receive a Ping for Merit Star and Maths Mission Awards on the Friday before.







RUDYARD KIPLING  
Primary School & Nursery,  
Woodingdean

# Rock Up And Read

Usually every Friday at 8:40-9:00





RUDYARD KIPLING  
Primary School & Nursery,  
Woodingdean

# Parent Newsletters and SchoolPing



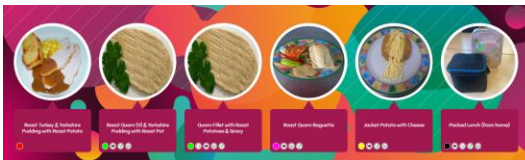
Use your SchoolPing  
account to receive  
important messages.





# Meal Manager

Please look through this with your child so they have something for lunch they like.



Freshly Baked Bread, Salad, Yoghurt and Fruit available daily. Milk free Yoghurt available daily & Ice Cream when served.

## Brighton & Hove Autumn/Winter Menu 2024



(V) Vegan Wholemeal

		MONDAY	TUESDAY	WEDNESDAY	THURSDAY	FRIDAY
WEEK ONE 4.11 25.11 16.12 20.1 10.2 10.3 31.3	Main	Macaroni Cheese	BBQ Chicken Fillet with Jollof Rice	Roast Chicken Breast & Stuffing with Roast Potatoes & Gravy	Farm Assured Beef Burger with Wedges & Tomato Relish	MSC Fishfingers with Chips & Homemade Tomato Sauce
	Vegetarian	Vegan Chilli with 50:50 rice	Vegan Quorn Sausages with Mashed Potato & Gravy	Sweet Potato & Spinach Tart with Roast Potatoes & Gravy (V)	Vegan Meatball Tomato Pasta	Falafel with Chips & Homemade Tomato Sauce (V)
	Jacket Potato	Baked Beans (V)	Tuna Mayonnaise	Cheese	Baked Beans (V)	Cheese
	Vegetable	Carrots & Sweetcorn	Peas & Cauliflower	Roasted Vegetables & Broccoli	Sweetcorn & Grated Carrot	Peas & Baked Beans
	Deserts	Apple & Raisin Flapjack with Peaches (V)	Chocolate Beetroot Cake	Jelly (V) & Ice Cream	Cornflake Tart & Custard or Jam Tart (V)	Oaty Cookie with Fruity Friday(V)
WEEK TWO 11.11 2.12 6.1 27.1 24.2 17.3	Main	Homemade Cheese & Tomato Pizza	Wholewheat Penne Pasta Bolognaise	Roast Turkey & Yorkshire Pudding with Roast Potatoes & Gravy	Chicken Tikka Masala with 50:50 Rice	Breaded Fish with Chips & Homemade Tomato Sauce
	Vegetarian	Vegan Cottage Pie	Veggie or Vegan Quesadilla with Jollof Rice	Roast Quorn (V) & Yorkshire Pudding, Roast Potatoes & Gravy	Golden Macaroni Cheese or Pasta with Tomato Sauce (V)	Mexican Bean Roll with Chips and Homemade Tomato Sauce (V)
	Jacket Potato	Baked Beans (V)	Tuna Mayonnaise	Cheese	Baked Beans (V)	Cheese
	Vegetable	Grated Carrot & Sweetcorn	Peas & Cauliflower	Carrot Batons & Savoy Cabbage	Green Beans & Sweetcorn	Peas & Baked beans
	Deserts	Fruity Shortbread (V)	Lemon Cake	Yoghurt Station & Fruit Platter	Jelly & Mandarins	Chocolate Cookie with Fruity Friday (V)
WEEK THREE 18.11 9.12 13.1 3.2 3.3 24.3	Main	Pork Sausages with Mashed Potato & Gravy	Wholewheat Penne Chicken Pasta Bake	Lemon & Herb Roast Chicken Thigh, Roast Potatoes & Gravy	Homemade Cheese & Tomato Pizza	Salmon Fishfingers with Chips & Homemade Tomato Sauce
	Vegetarian	Lentil & Sweet Potato Curry with Jollof Rice (V)	Vegan Puff Pastry Whirl with Homemade Jacket Wedges	Crunchy Vegetable Bake with Roast Potatoes & Gravy (V)	Wholewheat Penne Vegan Bolognaise	Vegan Quorn Sausages with Chips & Homemade Tomato Sauce (V)
	Jacket Potato	Tuna Mayonnaise	Baked Beans (V)	Cheese	Baked Beans (V)	Cheese
	Vegetable	Carrots & Sweetcorn	Broccoli & Cauliflower	Peas & Carrot Swede Mash	Sweetcorn & Coleslaw	Peas & Baked Beans
	Deserts	Golden Cookie (V)	Berry Mousse or Jelly (V)	Peaches (V) & Ice Cream	Fairtrade Banana Cake & Custard	Vanilla Shortbread with Fruity Friday (V)
	Packed Lunch	Tomato Pasta Salad (V)	Cheese and Cucumber Baguette	Roast Quorn Baguette (V)	Cream Cheese & Pepper Baguette	Hot Vegan Sausage Baguette (V)



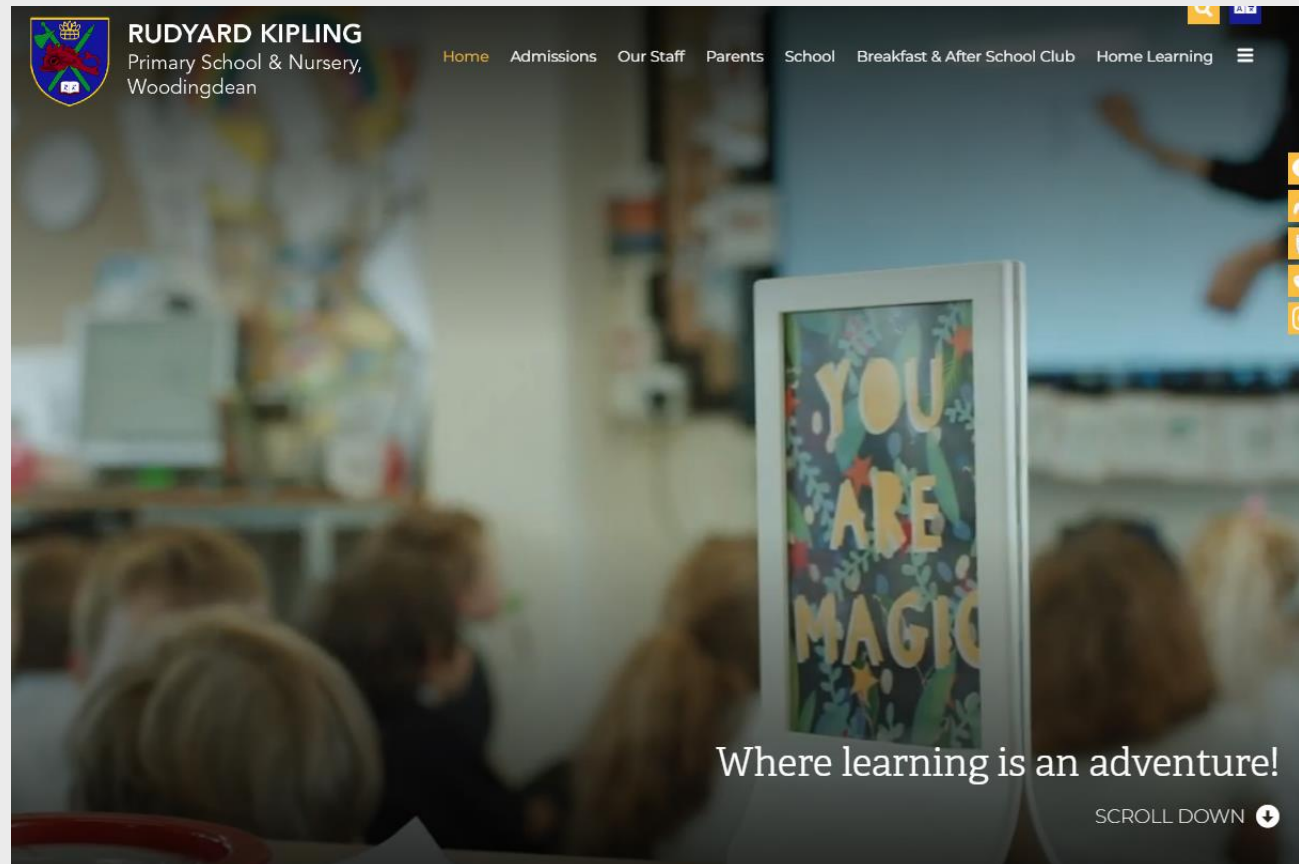




**RUDYARD KIPLING**  
Primary School & Nursery,  
Woodingdean

# School Website

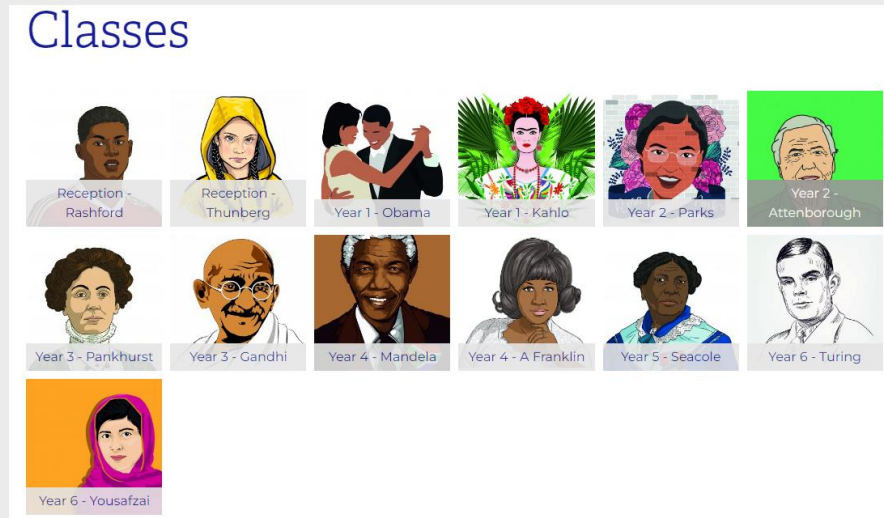
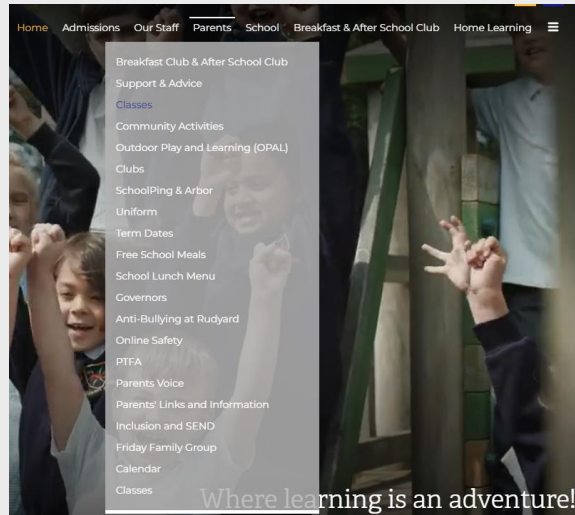
<https://www.rudyardkiplingprimary.co.uk/>





RUDYARD KIPLING  
Primary School & Nursery,  
Woodingdean

# Class Page



Meet the Teacher Parks



Year 2 Curriculum Map Autumn v2



Rudyard Menu Spring Summer 24 v6



Year 2 Words v2

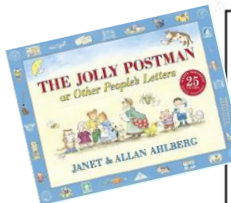


Year 1 Words v2





# Curriculum Map



English

- "Wild" (similar to the Jungle book)
- The Jolly Postman - explores fairy tales
- Marshmallow Clouds - poetry book inspire by nature.
- Looking at the features of riddles and creating their own mini beast riddle.
- Consolidating use of grammar and punctuation and starting to use more sophisticated vocabulary, punctuation and conjunctions.

Maths

- Measurement: Money
- Number: Fractions
- Measurement: Time
- Statistics
- Geometry: Position and Direction
- Consolidation and problem solving

Science

- Lifecycles of plants, animals and humans.
- Comparisons of different habitats – Drusillas Trip!
- Minibeast observations (using microscopes).
- Plant investigations (conditions needed for growth).
- Investigation of choice with an emphasis on fair testing.

Computing

- Children explore a unit on how to stay safe whilst using a computer.
- Coding- coding and animation- moving mini-beasts.

Art

Unit on sculptures:

- Researching Barbara Hepworth sculpture work.
- Observational sketching and designing a sculpture.
- Creating their own version of the Barbara Hepworth sculpture garden.

DT

- Designing, building and evaluating their own learning gardens and design moving mechanisms to go in it e.g. different minibeasts environments inspired from the book Wild.

Geography

- Lots of fieldwork opportunities, looking at local physical and human features. Local Walk.
- Building up to creating their own local map.

History

- Looking at the timeline of David Attenborough's life and significant events.

## Year 2 Summer Term- The Great Outdoors

PE

- Hit, Catch, Run- fielding, scoring points and batting
- Run, Jump, Throw- agility, power, balancing and obstacle courses
- Athletics

Music

- Clap rhythms
- Identify the beat of a tune.
- Recognise changes in timbre, dynamics and pitch.
- Create Soundscapes for outside environments.

PSHE

- Change - Human timelines, natural changes and changes we can make ourselves. Preparing for Year 3 - Meet the teacher days, celebrating achievements, setting targets ready for KS"
- Going for Goals - exploring the different learning styles children may use.
- Disability Equality Education
- Good to be me and Growing an Anti-Racist School
- Relationship and Sex Education - covering self-awareness, managing feelings, risk management and consent.

RE

- Learning about Christian's rites of passage.
- What Sikhs believe, their core values and beliefs.





Summer Term

## 'The Great Outdoors'

### Home Learning Tasks



This term is all about mini-beasts, habitats and everything outdoors!

<u>English</u> <ul style="list-style-type: none"><li>Choose a mini-beast that you think is really interesting and write a poem about it. Can you challenge yourself to make it rhyme?</li><li>Feeling really ADVENTUROUS? You could make your own poetry book with poems about all different kinds of mini-beasts, complete with a front cover and a blurb on the back!</li><li>Can you write a diary entry in the role of a caterpillar turning into a butterfly? Think about the different stages of the lifecycle. Remember to write in first person and use interesting verbs and adjectives as well as different sentence starters!</li></ul>	<u>History</u> <ul style="list-style-type: none"><li>David Attenborough loves all animals, including mini-beasts! Can you find out some more about who he is?</li><li>Make your own David Attenborough-style documentary about a mini-beast.</li></ul>
<u>Maths</u> <ul style="list-style-type: none"><li>Times tables – 2, 5, 10</li><li>Make some patterns on some mini-beasts like butterflies or ladybirds. Can you show your times tables with these patterns?</li><li>How many ways can you organise a group of mini-beasts? Think about number of legs, colour, <u>size</u>, how quickly/slowly they move. What other ways could you organise them?</li></ul>	<u>Geography</u> <ul style="list-style-type: none"><li>Make a map of a journey you take regularly. This could be your journey to school, to the park or to the house of a friend or family member. What landmarks can you include on it?</li><li>Last term we learnt about human and physical features. When you go on one of your daily walks, can you draw some pictures of the human and physical features you spot? Human features – built by humans. Physical features – come from the ground.</li></ul>
<u>Art/Design Technology</u> <ul style="list-style-type: none"><li>Can you make a paper <u>mache</u> mini-beast?</li><li>Can you make a mini-beast using natural objects you find outside in your garden or at the park?</li></ul>	<u>Science</u> <ul style="list-style-type: none"><li>Can you make a mini-beast hotel? What sort of things would make it the perfect home for a mini-beast?</li><li>What is a food chain? Find out about a food chain that involves a mini-beast. You could draw a picture of it, make a collage image of it or draw a cartoon to explain it!</li></ul>





# Parks Days for:

Computing: Monday



Library: Friday



## **Trips and Events:**

**Local Walk - Friday 16<sup>th</sup> May, 9am**

**Phonics Screening - WB 9<sup>th</sup> June**

**Drusillas Zoo Park - Tuesday 24<sup>th</sup> June**

**Drumming Workshop Summer 2, date TBC**

**Year 2 Sports Day - Monday 7<sup>th</sup> July, afternoon**

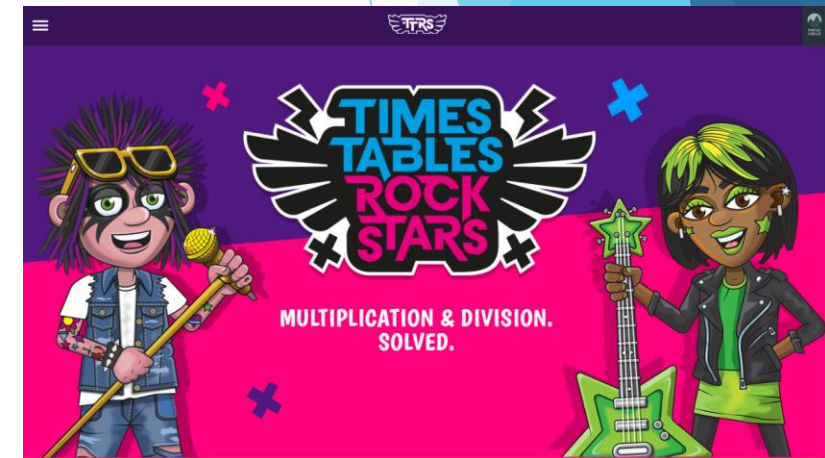


- Practise regularly
- Increase confidence
- Increase fluency
- Tackle challenges

Login:

surnam:@rkps.me

Password: words123





# Reading

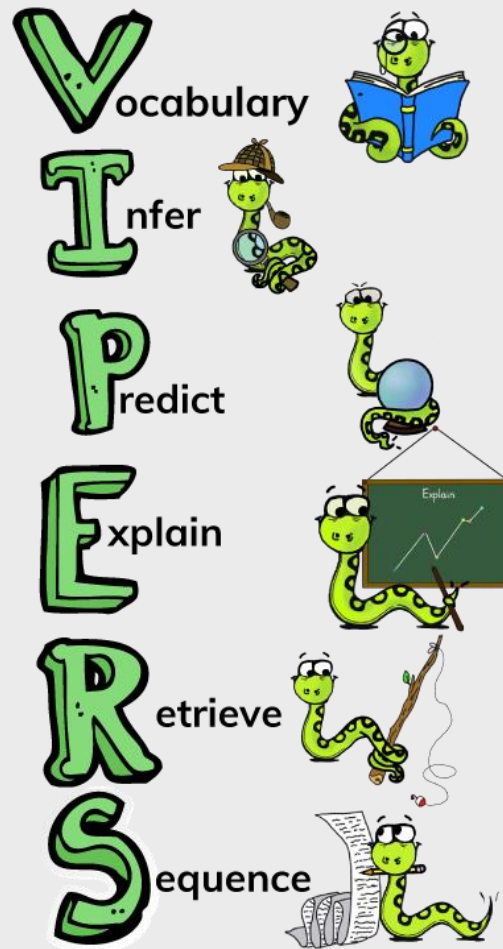
- Read your reading book 3 times a week
- Record this in your reading record
- Choose a reading for pleasure book
- Hand in your reading record weekly
- 3 reads = 1 raffle ticket drawn in Special Mentions assembly

Friday is the day to change reading books, but children can change them more often if they have done their 3 reads.



RUDYARD KIPLING  
Primary School & Nursery,  
Woodingdean

# How can I support my child with reading?







# How can I support my child with spelling?

## Year 1 Words

a	go	me	put	they
are	here	my	said	to
ask	has	no	says	today
be	he	of	school	was
by	his	one	she	we
come	house	once	so	were
do	I	our	some	where
friend	is	pull	the	you
full	love	push	there	your

## Year 2 Words

after	busy	door	gold	many	parents	should
again	child	even	grass	mind	pass	steal
any	children	every	great	money	past	sugar
both	Christmas	everybody	half	most	path	sure
beautiful	class	eye	hold	move	people	told
because	climb	fast	hour	Mr	plant	water
behind	clothes	father	improve	Mrs	poor	who
both	cold	find	kind	old	pretty	whole
break	could	floor	last	only	prove	wild
						would



# Phonics

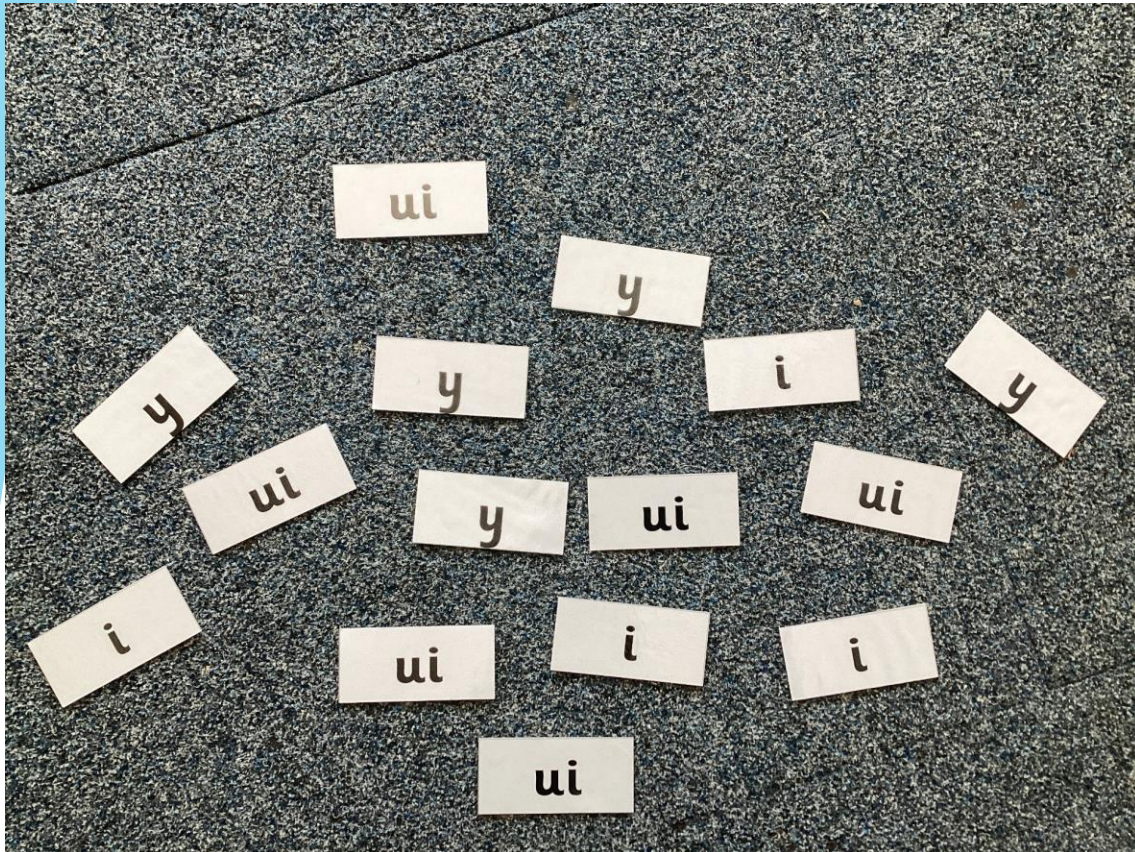
## Word List for the Sound /j/

j	g	ge	dge
job	gist	charge	fridge
jinx	germ	splurge	wedge
jolly	gentle	fringe	footbridge
jigsaw	German	plunge	porridge
junk	danger	challenge	badge
Jack	gem	age	judge
		large	



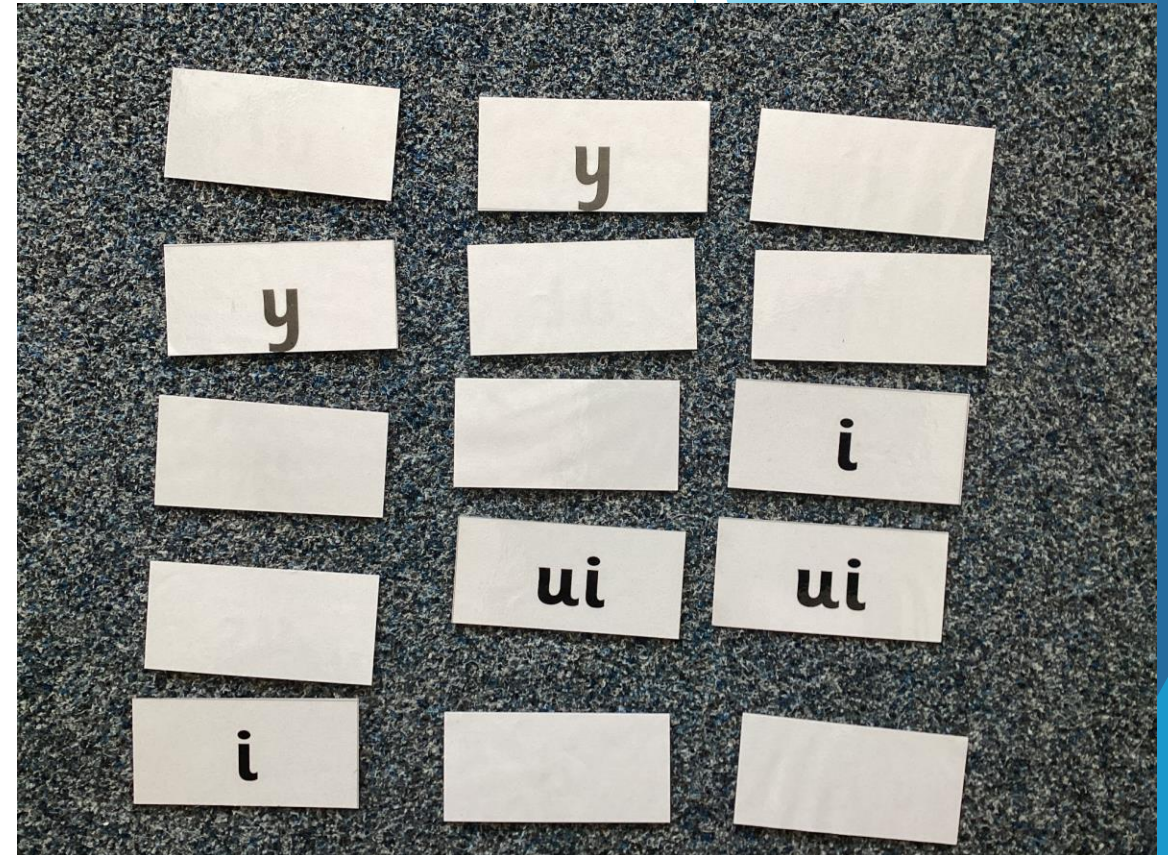


# Phonics



## Spelling Word Hunt - single or multiplayer

Find all the one of the spellings as quickly as you can for that sound.



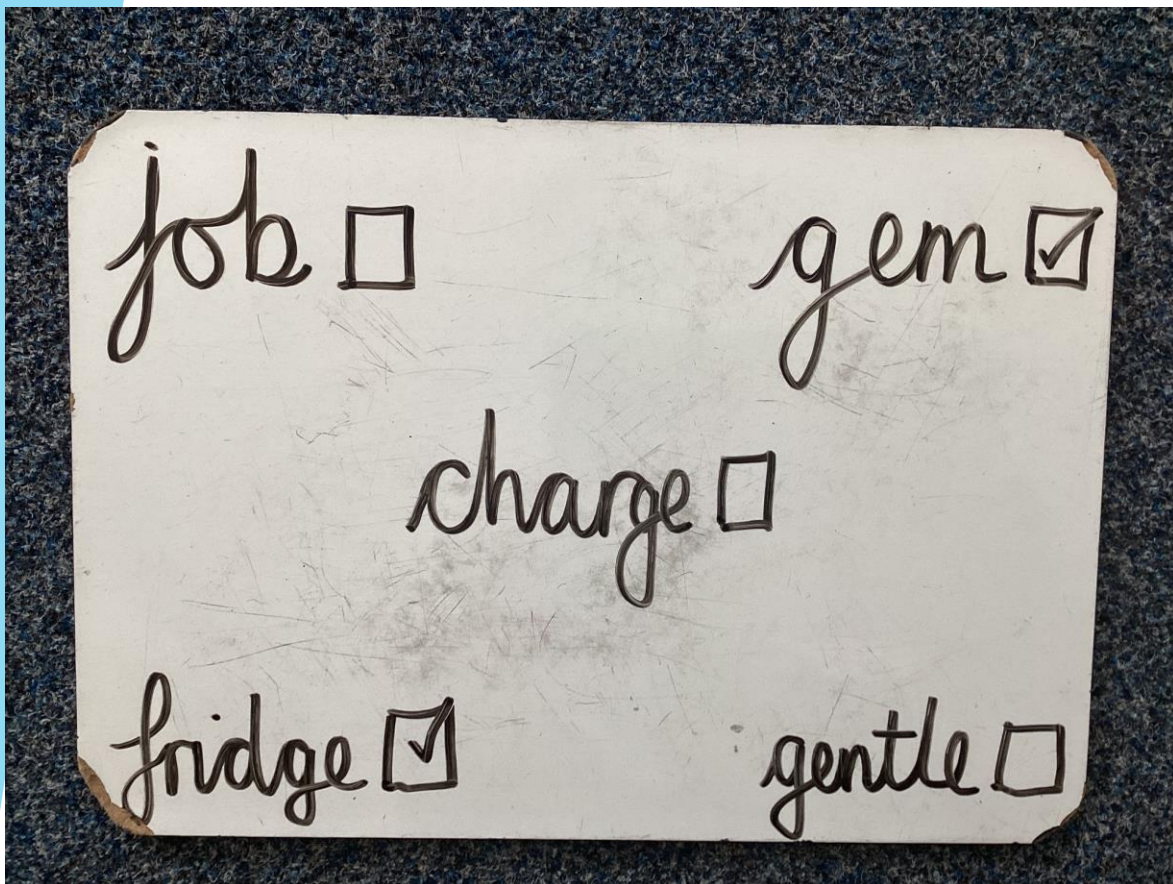
## Matching Pairs - multiplayer

Have all spellings of the sound face down, turning two over at a time. If the spelling matches, keep it.





# Phonics



## Word Bingo - multiplayer

Make words cards for 12 words. Your child copies 5 of them. Pull the words out of a hat/pot - the first to get their 5 words wins.



## Treasure or Trash - single or multiplayer

Have a mix of real and unreal words. Sort them into treasure for real words and trash for unreal words.





**RUDYARD KIPLING**  
Primary School & Nursery,  
Woodingdean

Any  
questions?

