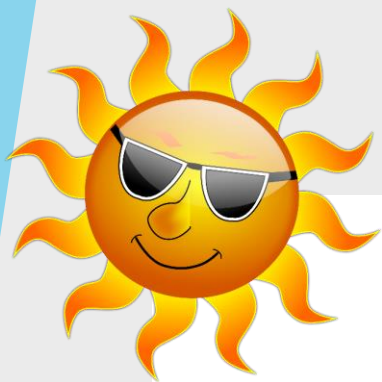




RUDYARD KIPLING
Primary School & Nursery,
Woodingdean

Meet the Teacher



Summer Term



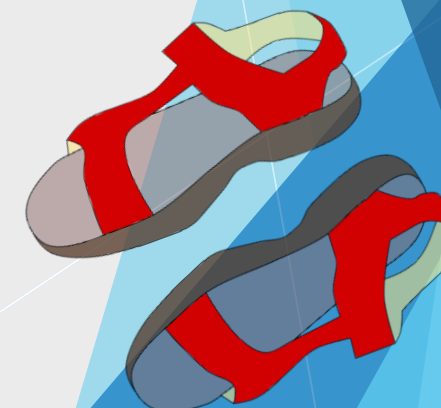
Attenborough Class



Mrs Brewer
Year 2 Teacher



Miss Goode
Learning Support Assistant





RUDYARD KIPLING

Primary School & Nursery,
Woodingdean

Today, we will remind ourselves about:

- Routines, timetables and any other parent/carers information
- Year group, class and home-school learning information
- Key events and dates this term
- Questions at the end



RUDYARD KIPLING
Primary School & Nursery,
Woodingdean

Rudyard Kipling Primary School & Nursery Our School Uniform

The children continue to look so smart - thank you.



Our school uniform is available on our Website and is:

- Plain grey skirt, pinafore dress, grey smart tailored trousers
- Navy sweatshirt, fleece with school logo - available from school
- Navy polo shirt with logo - available from school
- Securely fastening black or navy shoes
-Velcro fastenings only in Reception Class

In warmer weather the following may be worn:

- Navy & white striped or checked dress
- Plain grey tailored shorts
- Secure fastening sandals



Now it's getting warmer and sunnier outside...





RUDYARD KIPLING
Primary School & Nursery,
Woodingdean

PE Days



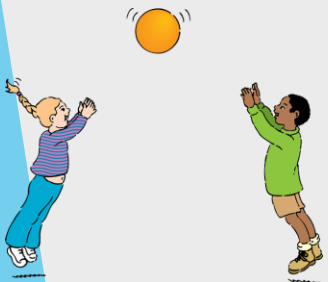
Attenborough Class's PE days are
Monday and Thursday

P.E.

All children need to have a PE kit. This is made up of the school navy PE t-shirt, dark shorts or navy joggers and plimsolls/trainers. However your children are welcome to wear a plain navy t-shirt.



All clothes and possessions should be carefully marked with the child's full name- permanent marker pens are perfect or see Stikins label flyer on our website.





RUDYARD KIPLING
Primary School & Nursery,
Woodingdean

Special Mentions



Special Mentions assemblies are still every Friday after Rock Up and Read.



You will continue to receive a Ping on the Friday before.

You will continue to receive a Ping for Merit Star and Maths Mission Awards on the Friday before.





RUDYARD KIPLING
Primary School & Nursery,
Woodingdean

Rock Up And Read

Usually every Friday at 8:40-9:00





RUDYARD KIPLING
Primary School & Nursery,
Woodingdean

Parent Newsletters and SchoolPing



Use your SchoolPing
account to receive
important messages.

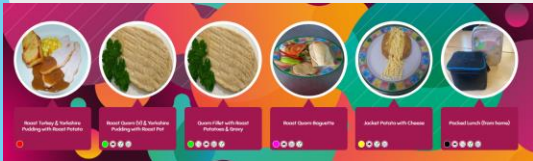




RUDYARD KIPLING
Primary School & Nursery,
Woodingdean

Meal Manager

Please look through this with your child so they have something for lunch they like.



Freshly Baked Bread,
Salad, Yoghurt and
Fruit available daily.

Brighton & Hove Spring/Summer Menu 2025

caterlink
feeding the imagination

(V) Vegan
Wholemeal

		MONDAY	TUESDAY	WEDNESDAY	THURSDAY	FRIDAY
WEEK ONE	Main	Macaroni Cheese	Chicken Quesadilla with Tomato Pasta	Roast Chicken Breast & Stuffing with Roast Potatoes & Gravy	Farm Assured Beef Burger with Homemade Jacket Wedges	MSC Fishfingers or Salmon Fishfingers with Chips & Homemade Tomato Sauce
	Vegetarian	Vegan Chilli with 50:50 rice	Vegan Quorn Sausages with Mashed Potato & Gravy	Lentil and Vegetable Roast with Roast Potatoes & Gravy (V)	Vegan Meatballs in a Tomato Pasta	Falafel with Chips & Homemade Tomato Sauce (V)
	Jacket Potato	Baked Beans (V)	Tuna Mayonnaise	Cheese	Baked Beans (V) & cheese	Cheese
	Vegetable	Carrots & Peas	Broccoli & Sweetcorn	Spring Greens & Carrot Batons	Green Beans & Sweetcorn	Peas & Baked Beans
	Dessert	Apple & Raisin Flapjack with Peaches (V)	Golden Cookie (v)	Jelly (V) & Ice Cream or Vegan Custard	Fairtrade Banana Cake with Custard or Vanilla Shortbread with Vegan Custard (V)	Chocolate Shortbread with Fruity Friday(V)
WEEK TWO	Main	Pork Sausages with Mashed Potato and Gravy	Chicken Korma with 50:50 Rice	Roast Turkey & Yorkshire Pudding with Roast Potatoes & Gravy	Homemade Cheese and Tomato Pizza	Breaded Fish with Chips & Homemade Tomato Sauce
	Vegetarian	Vegetable Wellington with Jollof Rice (v)	Wholemeal Vegan Pasta Bolognese	Roast Vegan Quorn (V) & Yorkshire Pudding, Roast Potatoes & Gravy	Veggie or Vegan Quesadilla with Homemade Jacket Wedges	Mexican Bean Roll with Chips & Homemade Tomato Sauce (v)
	Jacket Potato	Cheese	Baked Beans (V)	Tuna Mayonnaise	Baked Beans (V) & Cheese	Cheese
	Vegetable	Carrots & Sweetcorn	Cabbage & Sweetcorn	Broccoli & Sliced Carrots	Sweetcorn & Coleslaw	Peas & Baked beans
	Dessert	Fruity Shortbread (V)	Fairtrade Chocolate & Banana Oaty Square (V)	Fruit Jelly with Mandarins (V)	Cornflake Tart with Custard or Jam Tart with Vegan Custard (V)	Oaty Cookie with Fruity Friday (V)
WEEK THREE	Main	Homemade Cheese & Tomato Pizza	Wholewheat Penne Pasta Beef Bolognese	Roast Chicken Breast & Stuffing with Roast Potatoes & Gravy	Marinated Chicken Pitta with Jollof Rice	MSC Fishfingers with Chips & Homemade Tomato Sauce
	Vegetarian	Lentil & Sweet Potato Curry with 50:50 Rice (V)	BBQ Quorn with Homemade Jacket Wedges (V)	Sweet Potato & Spinach Tart with Roast Potatoes & Gravy (v)	Golden Macaroni Cheese or Vegan Wholemeal Tomato Pasta Bake	Vegan Quorn Sausages with Chips & Homemade Tomato Sauce (V)
	Jacket Potato	Baked Beans (V)	Tuna Mayonnaise	Cheese	Baked Beans & Cheese	Cheese
	Vegetable	Grated Carrot & Peas	Broccoli & Sweetcorn	Cabbage & Carrot	Sweetcorn & Roasted Summer Vegetables	Peas & Baked Beans
	Dessert	Cinnamon Cookie (V)	Chocolate & Beetroot Brownie or Chocolate & Banana Oaty Square (V)	Peaches (V) With Ice Cream or Vegan Custard (V)	Orange Cake or Oaty Cookie (v)	Vanilla Shortbread with Fruity Friday (V)
	Packed Lunch	Hot Vegan Sausage Baguette	Ham & Cheese Bagel	Roast Meat Baguette	Cheese & Cucumber Bagel	Hot Pork Sausage Baguette



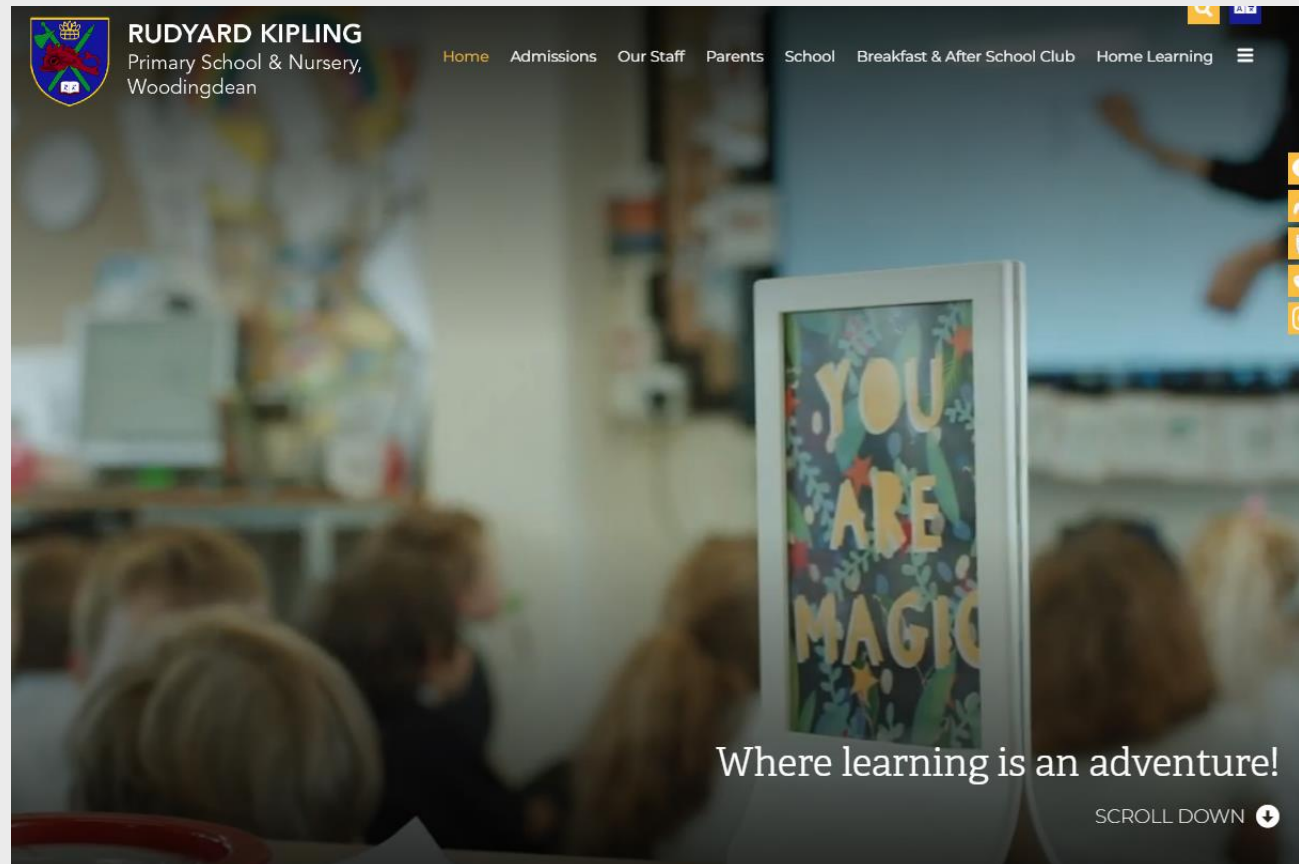
feeding the imagination



RUDYARD KIPLING
Primary School & Nursery,
Woodingdean

School Website

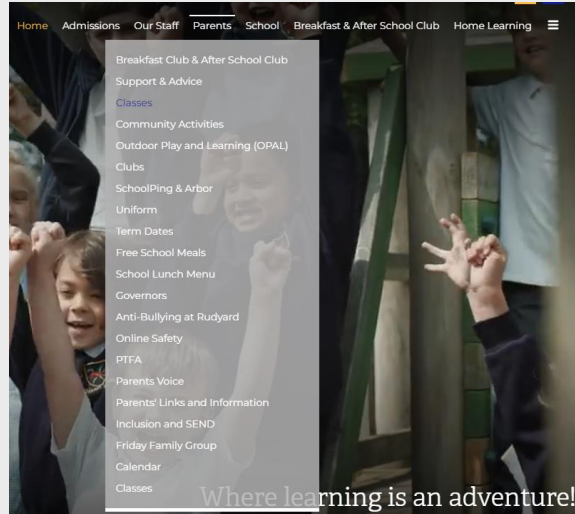
<https://www.rudyardkiplingprimary.co.uk/>



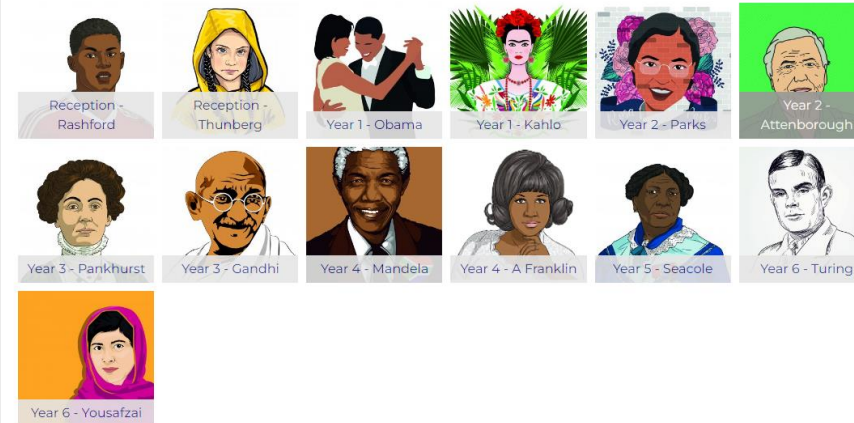


RUDYARD KIPLING
Primary School & Nursery,
Woodingdean

Class Page



Classes



Year 2
Attenborough



Teamwork

Meet the Teacher Attenborough Spring Term



Curriculum overview spring 1 pdf



Spring 1 Fire Home Learning pdf



Year 2 Words



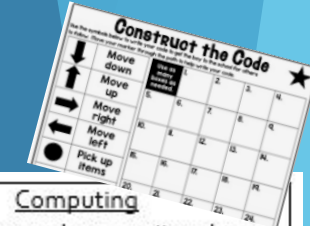
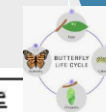
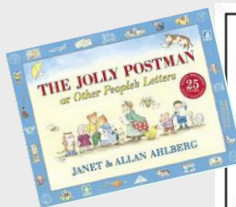
Year 1 Words





RUDYARD KIPLING

Primary School & Nursery,
Woodingdean



Curriculum Map

English

- "Wild" (similar to the Jungle book)
- The Jolly Postman - explores fairy tales
- Marshmallow Clouds - poetry book inspire by nature.
- Looking at the features of riddles and creating their own mini beast riddle.
- Consolidating use of grammar and punctuation and starting to use more sophisticated vocabulary, punctuation and conjunctions.

Year 2 Summer Term- The Great Outdoors

PE

- Hit, Catch, Run- fielding, scoring points and batting
- Run, Jump, Throw- agility, power, balancing and obstacle courses
- Athletics

Music

- Clap rhythms
- Identify the beat of a tune.
- Recognise changes in timbre, dynamics and pitch.
- Create Soundscapes for outside environments.

Maths

- Measurement: Money
- Number: Fractions
- Measurement: Time
- Statistics
- Geometry: Position and Direction
- Consolidation and problem solving

Science

- Lifecycles of plants, animals and humans.
- Comparisons of different habitats – Drusillas Trip!
- Minibeast observations (using microscopes).
- Plant investigations (conditions needed for growth).
- Investigation of choice with an emphasis on fair testing.

Computing

- Children explore a unit on how to stay safe whilst using a computer.
- Coding- coding and animation- moving mini-beasts.

Art

- Unit on sculptures:
- Researching Barbara Hepworth sculpture work.
- Observational sketching and designing a sculpture.
- Creating their own version of the Barbara Hepworth sculpture garden.

DT

- Designing, building and evaluating their own learning gardens and design moving mechanisms to go in it e.g. different minibeasts environments inspired from the book Wild.

Geography

- Lots of fieldwork opportunities, looking at local physical and human features. Local Walk.
- Building up to creating their own local map.

History

- Looking at the timeline of David Attenborough's life and significant events.

PSHE

- Change - Human timelines, natural changes and changes we can make ourselves. Preparing for Year 3 - Meet the teacher days, celebrating achievements, setting targets ready for KS2
- Going for Goals - exploring the different learning styles children may use.
- Disability Equality Education
- Good to be me and Growing an Anti-Racist School
- Relationship and Sex Education - covering self-awareness, managing feelings, risk management and consent.

RE

- Learning about Christian's rites of passage.
- What Sikhs believe, their core values and beliefs.



RUDYARD KIPLING

Primary School & Nursery,
Woodingdean



Summer Term 'The Great Outdoors' Home Learning Tasks



This term is all about mini-beasts, habitats and everything outdoors!

English

- o Choose a mini-beast that you think is really interesting and write a poem about it. Can you challenge yourself to make it rhyme?
- o Feeling really ADVENTUROUS? You could make your own poetry book with poems about all different kinds of mini-beasts, complete with a front cover and a blurb on the back!
- o Can you write a diary entry in the role of a caterpillar turning into a butterfly? Think about the different stages of the lifecycle. Remember to write in first person and use interesting verbs and adjectives as well as different sentence starters!

Maths

- o Times tables – 2, 5, 10
- o Make some patterns on some mini-beasts like butterflies or ladybirds. Can you show your times tables with these patterns?
- o How many ways can you organise a group of mini-beasts? Think about number of legs, colour, and size and how quickly/slowly they move. What other ways could you organise them?

Art/Design Technology

- o Can you make a paper mache mini-beast?
- o Can you make a mini-beast using natural objects you find outside in your garden or at the park?

History

- o David Attenborough loves all animals, including mini-beasts! Can you find out some more about who he is?
- o Make your own David Attenborough-style documentary about a mini-beast.

Geography

- o Make a map of a journey you take regularly. This could be your journey to school, to the park or to the house of a friend or family member. What landmarks can you include on it?
- o Last term we learnt about human and physical features. When you go on one of your daily walks, can you draw some pictures of the human and physical features you spot?
Human features – built by humans.
Physical features – come from the ground.

Science

- o Can you make a mini-beast hotel? What sort of things would make it the perfect home for a mini-beast?
- o What is a food chain? Find out about a food chain that involves a mini-beast. You could draw a picture of it, make a collage image of it or draw a cartoon to explain it!



RUDYARD KIPLING
Primary School & Nursery,
Woodingdean

Attenborough Days for:

Computing: TUESDAY



Library: WEDNESDAY



Trips and Events:

Local Walk - Friday 16th May, 9am

Phonics Screening - WB 9th June

Drusillas Zoo Park - Tuesday 24th June

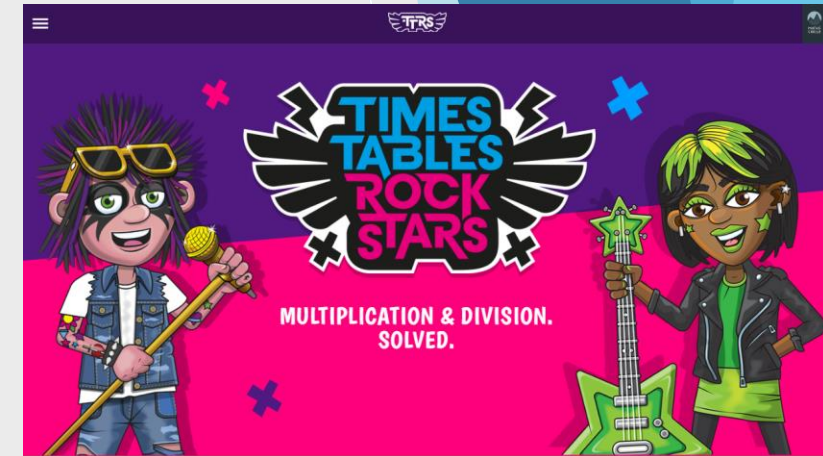
Drumming Workshop Summer 2, date TBC

Year 2 Sports Day - Monday 7th July, afternoon



- Practise regularly
- Increase confidence
- Increase fluency
- Tackle challenges

Login:
surnam:@rkps.me
Password: words123





Reading

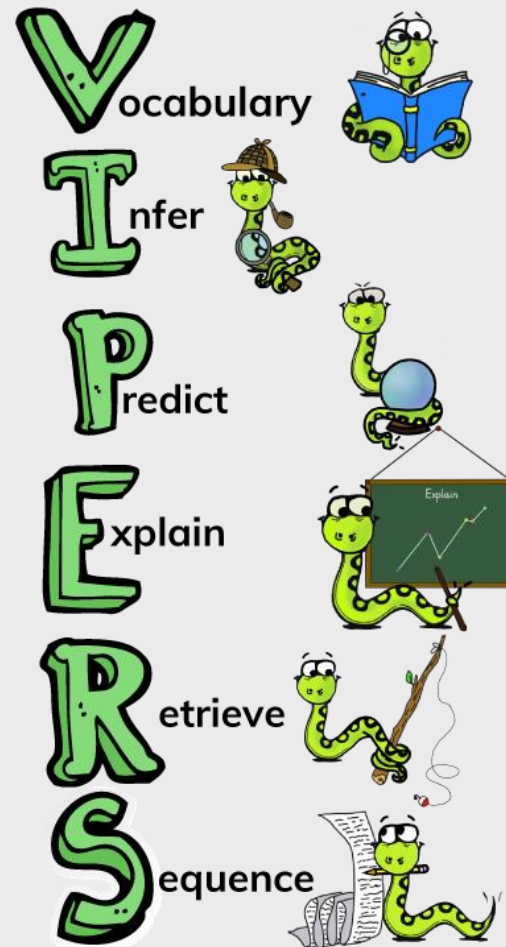
- Read your reading book 3 times a week
- Record this in your reading record
- Choose a reading for pleasure book
- Hand in your reading record weekly
- 3 reads = 1 raffle ticket drawn in Special Mentions assembly

Friday is the day to change reading books, but children can change them more often if they have done their 3 reads.



RUDYARD KIPLING
Primary School & Nursery,
Woodingdean

How can I support my child with reading?





How can I support my child with spelling?

Year 1 Words

a	go	me	put	they
are	here	my	said	to
ask	has	no	says	today
be	he	of	school	was
by	his	one	she	we
come	house	once	so	were
do	I	our	some	where
friend	is	pull	the	you
full	love	push	there	your

Year 2 Words

after	busy	door	gold	many	parents	should
again	child	even	grass	mind	pass	steal
any	children	every	great	money	past	sugar
both	Christmas	everybody	half	most	path	sure
beautiful	class	eye	hold	move	people	told
because	climb	fast	hour	Mr	plant	water
behind	clothes	father	improve	Mrs	poor	who
both	cold	find	kind	old	pretty	whole
break	could	floor	last	only	prove	wild
						would



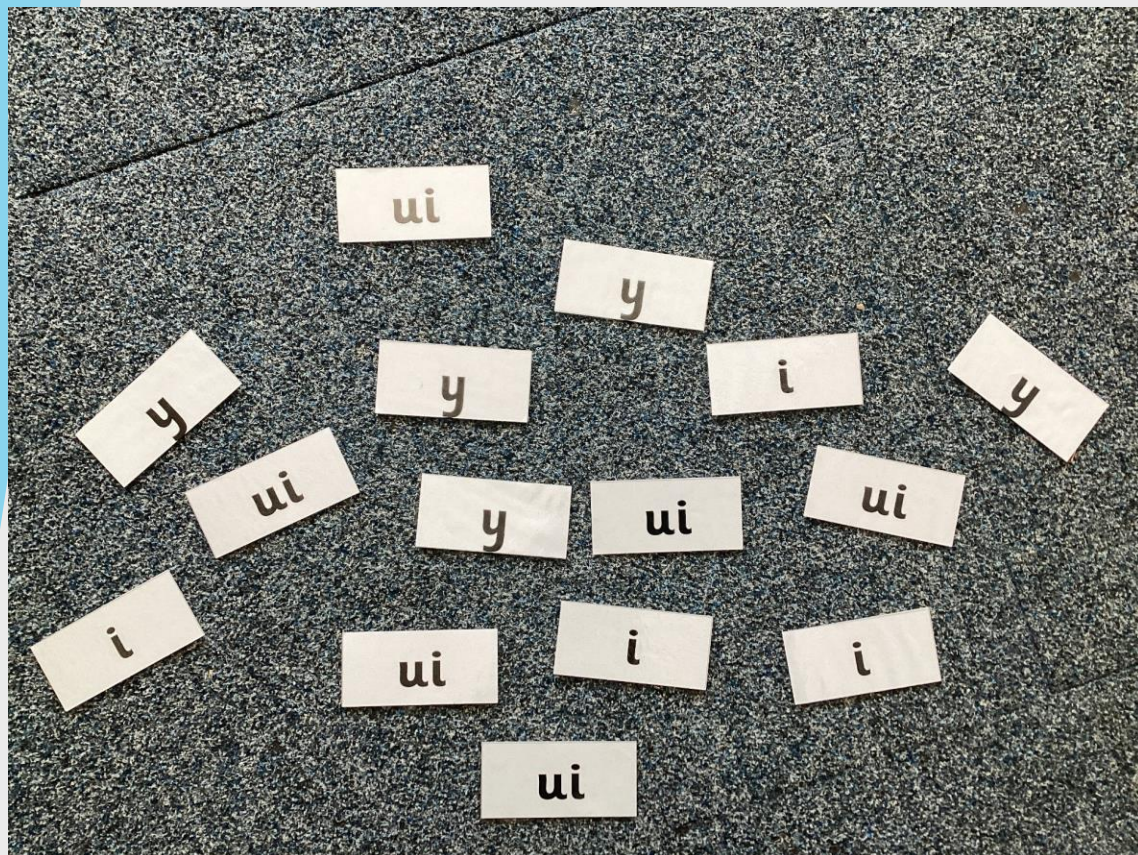
Phonics

Word List for the Sound /j/

j	g	ge	dge
job	gist	charge	fridge
jinx	germ	splurge	wedge
jolly	gentle	fringe	footbridge
jigsaw	German	plunge	porridge
junk	danger	challenge	badge
Jack	gem	age	judge
		large	

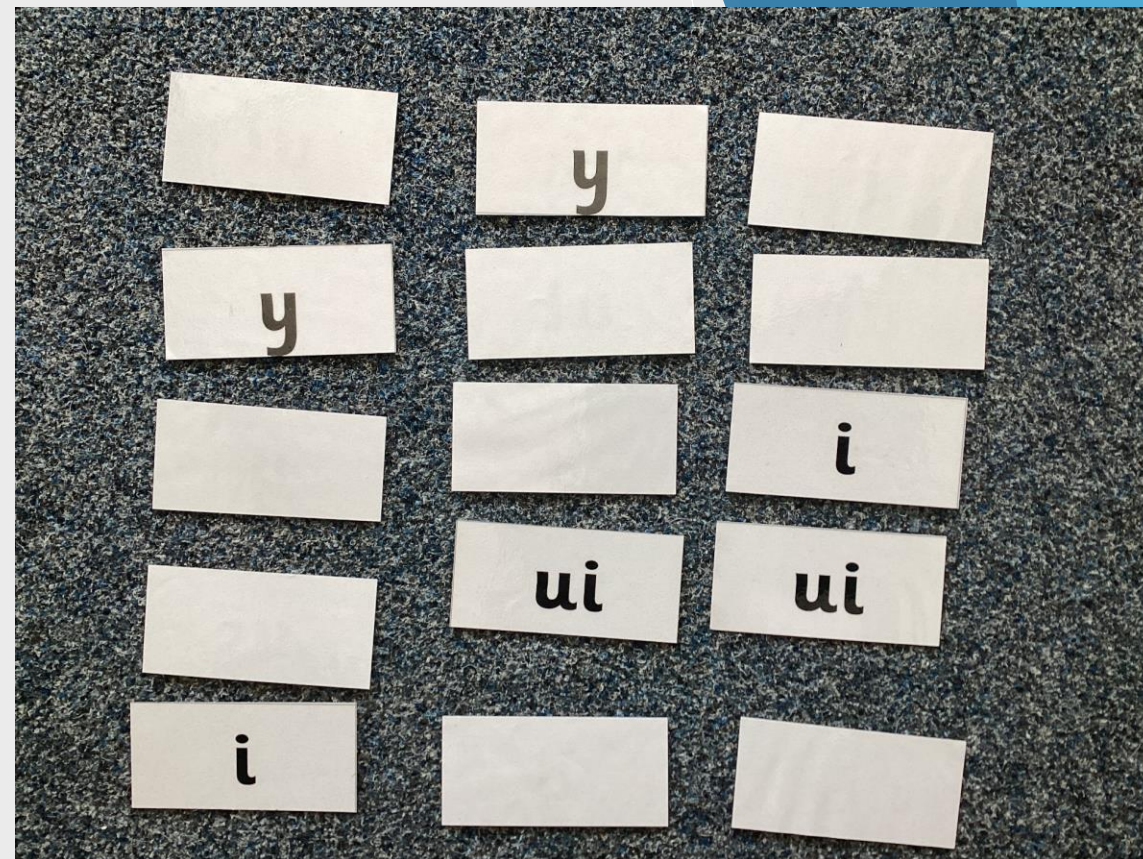


Phonics



Spelling Word Hunt - single or multiplayer

Find all the one of the spellings as quickly as you can for that sound.

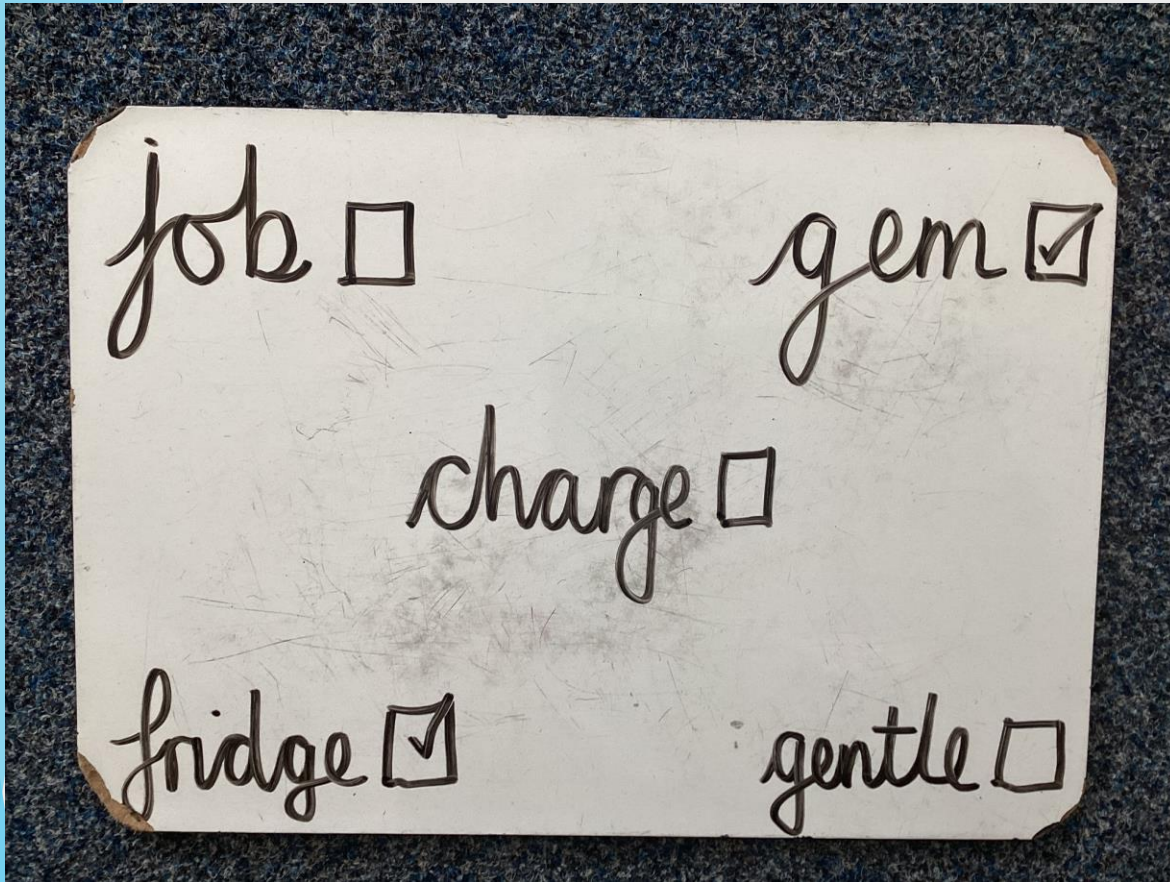


Matching Pairs - multiplayer

Have all spellings of the sound face down, turning two over at a time. If the spelling matches, keep it.



Phonics



Word Bingo - multiplayer

Make words cards for 12 words. Your child copies 5 of them. Pull the words out of a hat/pot - the first to get their 5 words wins.



Treasure or Trash - single or multiplayer

Have a mix of real and unreal words. Sort them into treasure for real words and trash for unreal words.



RUDYARD KIPLING
Primary School & Nursery,
Woodingdean

Any
questions?

