



Classroom Connect



Spring Term



Obama Class

Meet the adults in
Obama class



Miss Sandat
Year 1 Teacher



RUDYARD KIPLING

Primary School & Nursery,
Woodingdean

Today, we will talk about:

- Routines, timetables and any other parent/carers information
- Year group, class and home-school learning information
- Questions at the end



Rudyard Kipling Primary School & Nursery

Our School Uniform

The children look so smart - thank you.



Our school uniform is available on our Website and is:

- Plain grey skirt, pinafore dress, grey smart tailored trousers
- Navy sweatshirt, fleece with school logo - available from school
- Navy polo shirt with logo - available from school
- Securely fastening black or navy shoes
-Velcro fastenings only in Reception Class

In warmer weather the following may be worn:

- Navy & white striped or checked dress
- Plain grey tailored shorts
- Secure fastening sandals



Now it's so chilly outside...





RUDYARD KIPLING
Primary School & Nursery,
Woodingdean

PE Days



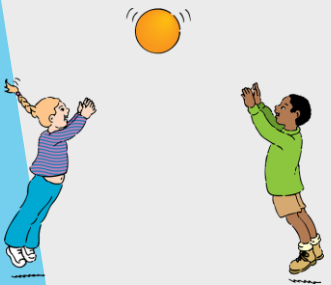
Obama Class PE days are
Monday and Wednesday

P.E.

All children need to have a PE kit. This is made up of the school navy PE t-shirt, dark shorts or navy joggers and plimsolls/trainers. However your children are welcome to wear a plain navy t-shirt.



All clothes and possessions should be carefully marked with the child's full name- permanent marker pens are perfect or see Stikins label flyer on our website.





RUDYARD KIPLING
Primary School & Nursery,
Woodingdean

Forest School



Obama Forest School will be
once a week this half term on
Wednesdays.



RUDYARD KIPLING
Primary School & Nursery,
Woodingdean

Special Mentions



Special Mentions assemblies are every Friday after Rock Up and Read.



You will receive an Arbor notification on the Friday before.

You will also receive an Arbor notification for Merit Star and Maths Mission Awards on the Friday before.





RUDYARD KIPLING
Primary School & Nursery,
Woodingdean

Rock Up And Read

Every Friday at 8:40-8:55





RUDYARD KIPLING
Primary School & Nursery,
Woodingdean

Parent Newsletters

Friday 19th December 2025

Issue 25-26 15

Headteacher Reports:

What a magical last couple of weeks it has been!

Last Saturday's PTFA Christmas Light Trail was something to behold. Father Christmas grotto, fun crafting stations, toasting marshmallows in Forest School, amazing story reading by Jesse's mum, Kelly. I could go on! And all for the princely sum of...£7 a ticket! This was an inclusive event that will not be forgotten by anyone who attended. There are far too many people to thank so I won't even try but you know who you are.

The long Rudyard history of plays and productions proudly continues. I've just counted up that we put on 17 different performances/events this fortnight: from Nursery 'Craftermoons' through to the choir singing at one of our local care homes. Memories of most of these special events can be seen on our school 'Instagram' page so do take a look at your leisure.

Yesterday afternoon, we were treated to a special performance from our 25 strong RKPS choir. Those parents who came along will vouch for just how high quality the singing was, it was so very impressive.

We are only able to provide our children and whole school community with such high quality experiences because of the excellence of our whole staff team. From the cooks feeding us delicious food to the cleaning team who make our school shine through to the adults nurturing and teaching our children-a more dedicated group of adults you will not find.

I would like to thank each and every adult who works their socks off to provide our amazing children with myriad memorable school experiences, ensuring that learning is an adventure.

Finally, I would like to thank you all for lending us your incredible children for 6 and a half hours a day: every child is unique and talented in their own individual way.

We are all rather proud of our local authority community school, thank you for the part you play in its success.

Wishing you all a very Merry Christmas and we look forward to seeing everyone again on Monday January 5th.

Merry Christmas!

Euan Hainington

Headteacher



Wescott Thursdays

The next Wescott Thursday (8th January) will be Year Y4.

Forest School with Mr Wescott

Tuesday 6th January - Year 5 Seacole AM

Tuesday 6th January - Year 2 Parks PM

Wednesday 7th January - Year 4 Mandela AM

Wednesday 7th January - Year 4 Pankhurst PM

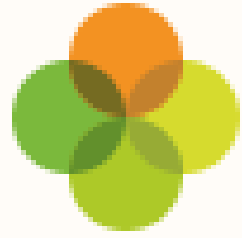
Thursday 8th January - Year 4 Franklin PM



RKPS Choir

Dates for the Diary

January 26	
Monday 5 th	START OF TERM (children return)
Monday 12 th	Nursery S&L session (9:00am-10:00am)
Thursday 15 th	Year 4 Franklin - Farm School
Friday 16 th	Year 5 Soundmakers starts



Arbor

- Letters and admin
- Bookings

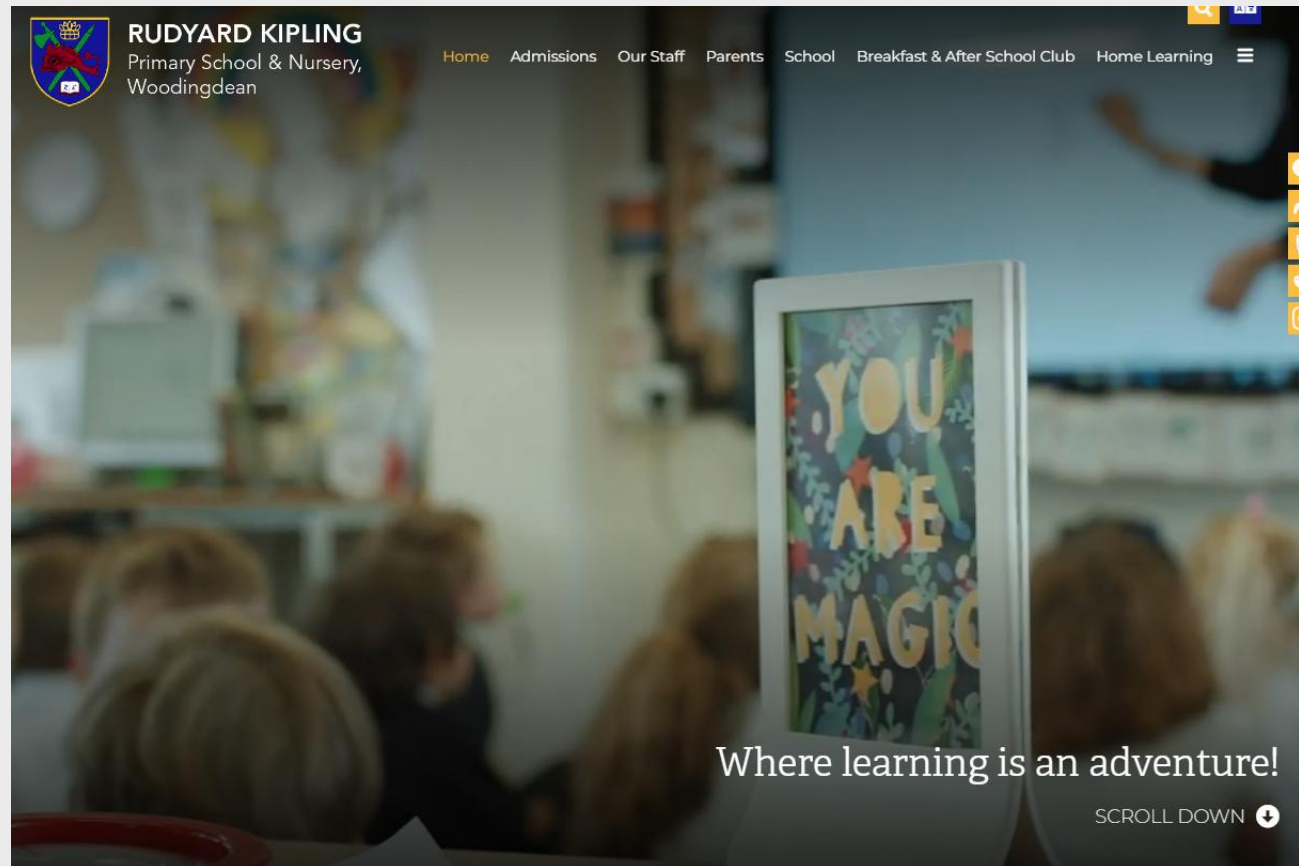
We no longer
use Ping!



RUDYARD KIPLING
Primary School & Nursery,
Woodingdean

School Website

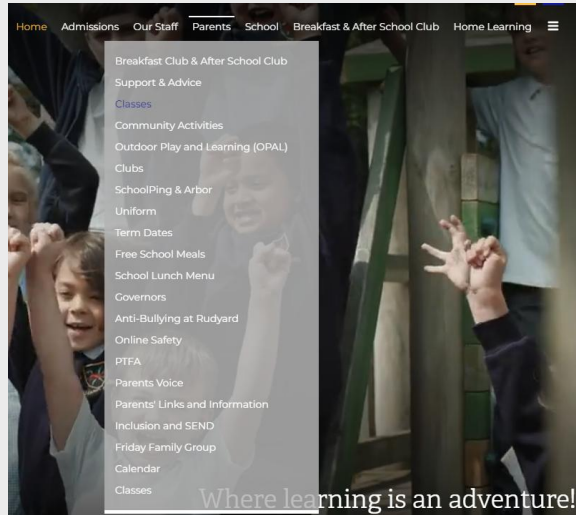
<https://www.rudyardkiplingprimary.co.uk/>



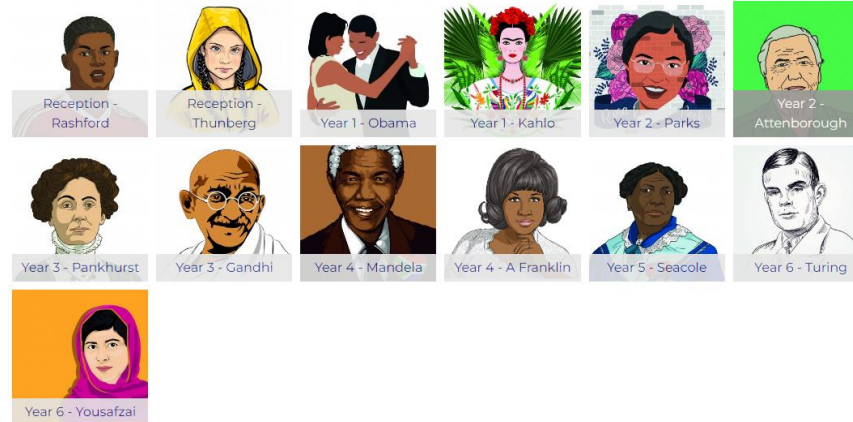


RUDYARD KIPLING
Primary School & Nursery,
Woodingdean

Class Page



Classes





Curriculum Map

English

Book studies:

- Winter Sleep
- Rapunzel
- Where the wild things are
- Non fiction texts about castles

Art/ Design Technology

- Join materials to make a 3d model of a castle.
- Create a block printing castle picture inspired by Paul Klee's Castle and Sun painting.
- Weaving

Geography

- Identify the key features of a location in order to say whether it is a city, town, village, coastal or rural area.
- Ask and answer geographical questions (such as: What is this place like? What or who will I see in this place? What do people do in this place?).
- Use geographical language to refer to human and physical aspects of geography (beach coast, beach, city, town).
- Identify position of castles around the UK.

Maths

- Place value within 20 and 50
- Addition and subtraction within 20
- Counting in 2s, 5s and 10s
- Measurement (length, height, mass, volume)

Turrets and Tiaras Year 1



Computing

- Online Safety
- Continue to develop mouse skill (click and drag)
- Continue to develop typing

History

- Learning how things change over time
- Make simple timelines
- Identifying where and why castles were built
- Learning about the parts of a castle
- Learning about the jobs that people did in castles
- Learn a Medieval dance
- Fantastic finish – Medieval banquet

Science

- Continue to work scientifically, asking questions, observing closely, identifying and classifying, performing simple tests, using observations and suggesting answers to questions, gathering and recording data in response to questions.
- Identify and name a variety of materials
- Investigate and describe the properties of different materials.

Physical Education

- Gymnastics- apparatus work.
- Games skills with Sports Coach (Mr Hoad), PE specialist.

PHSE

Going for Goals

Choosing a realistic goal

To discuss right from wrong

Knight's code of chivalry

Music

- To perform (singing, follow instructions, make and control sounds, imitate changes of pitch).
- Learn song: Into the Groove
- To be able to follow pulse and rhythm.
- To begin to learn simple songs on the glockenspiel.

Religious Education

- Special books
- Easter story



RUDYARD KIPLING
Primary School & Nursery,
Woodingdean

Obama Days for:

Computing: Friday



Library: Friday



Dates: Phonics Workshop, Wednesday 21st January, 2.30pm

Upcoming trips - Turrets and Tiaras day, Thursday 22nd January ALL DAY
- Sea life centre TBC





RUDYARD KIPLING
Primary School & Nursery,
Woodingdean



- Practise regularly
- Increase confidence
- Increase fluency
- Tackle challenges

Times Tables
homework
will be
starting
later this
year.

First 3
letters of
surname

First 3
letters of
forename

Login: surnam
surnam:@rkps.me
Password: words123





Reading

- Read your reading book 3 times a week
- Record this in your reading record
- Choose a reading for pleasure book
- Hand in your reading record weekly
- 3 reads = 1 raffle ticket drawn in Special Mentions assembly



RUDYARD KIPLING
Primary School & Nursery,
Woodingdean

How can I
support my
child with
reading?

V

ocabulary



I

nfer



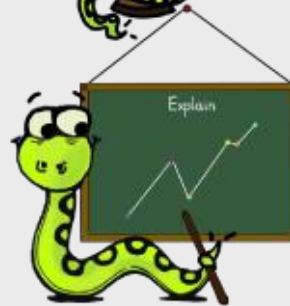
P

redict



E

xplain



R

etrieve



S

equence



How can I support my child with spelling?

Year 1 Words

Year 1 Common Exception Words

the
a
do
to
today
of
said
says
are
were
was

is
his
has
I
you
your
they
be
he
me
she
we

no
go
so
by
my
here
there
where
love
come
some

one
once
ask
friend
school
put
push
pull
full
house
our

Year 2 Words

New Curriculum Spelling List Year 2

door	child	cold	pretty	grass	improve	parents	poor
wild	gold	beautiful	pass	sugar	Christmas	find	most
hold	after	plant	could	everybody	mind	both	told
fast	path	would	even	floor	children	every	last
bath	sure	because	climb	great	past	hour	eye
kind	only	break	father	move	should	behind	old
steak	class	prove	who	whole	many	busy	water
half	Mr	any	clothes	people	again	money	Mrs



Phonics

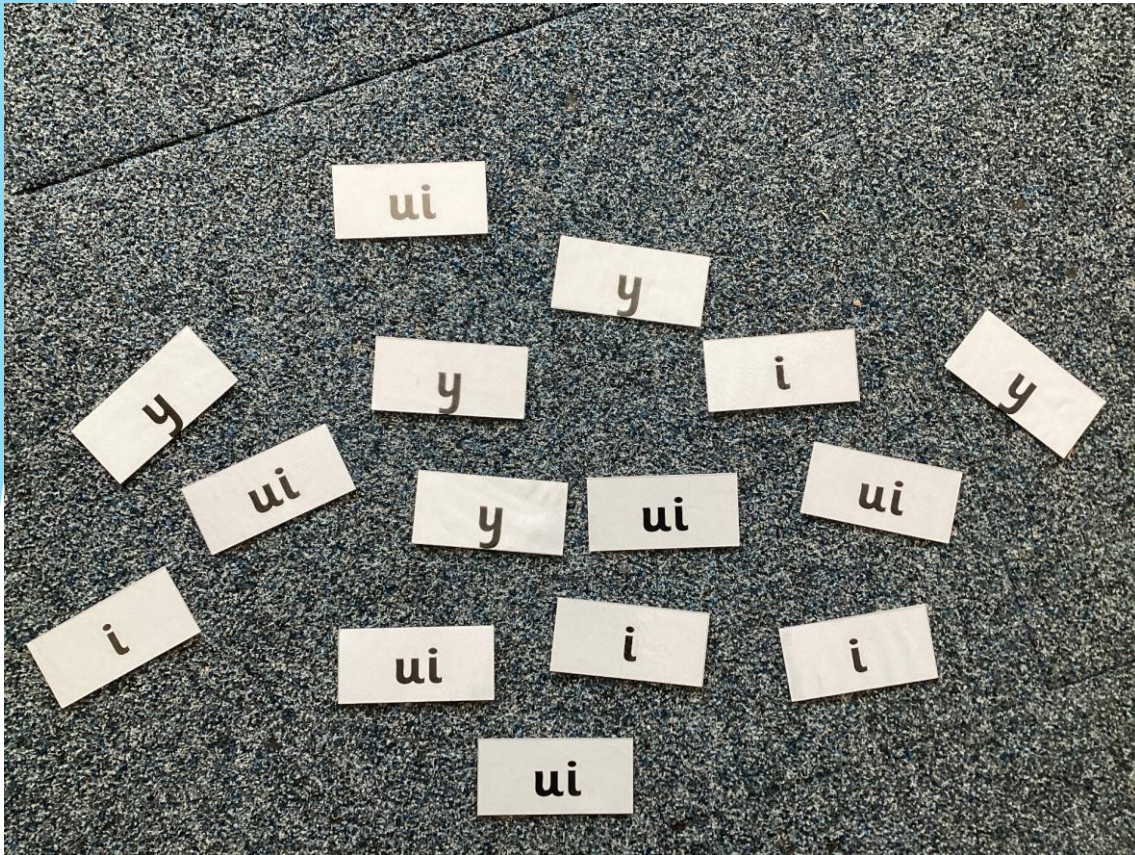
Every 2 weeks, your child will be given a list of words that have our fortnightly sound. This will show how that sound is represented by different spellings.

Word List for the Sound /j/

j	g	ge	dge
job	gist	charge	fridge
jinx	germ	splurge	wedge
jolly	gentle	fringe	footbridge
jigsaw	German	plunge	porridge
junk	danger	challenge	badge
Jack	gem	age	judge
		large	

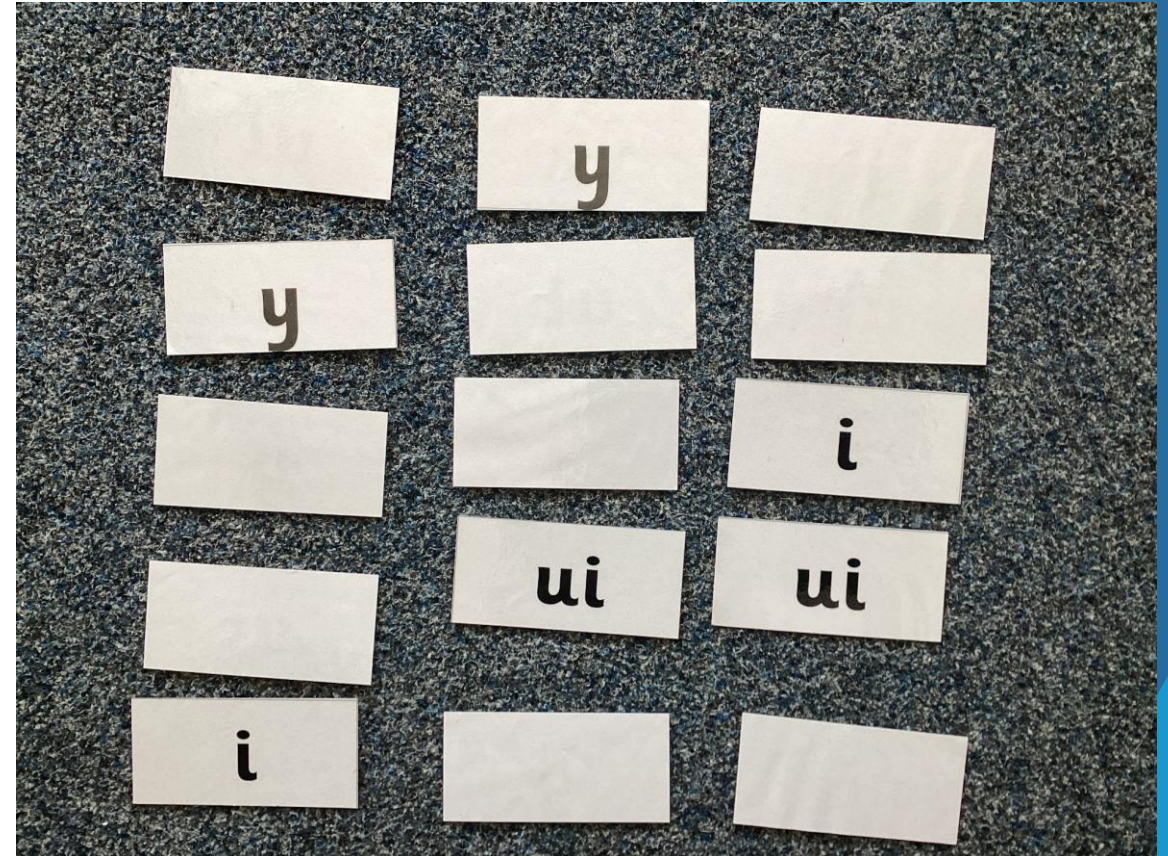


Examples of Phonics Games You Can Play



Spelling Word Hunt - single or multiplayer

Find all the one of the spellings as quickly as you can for that sound.

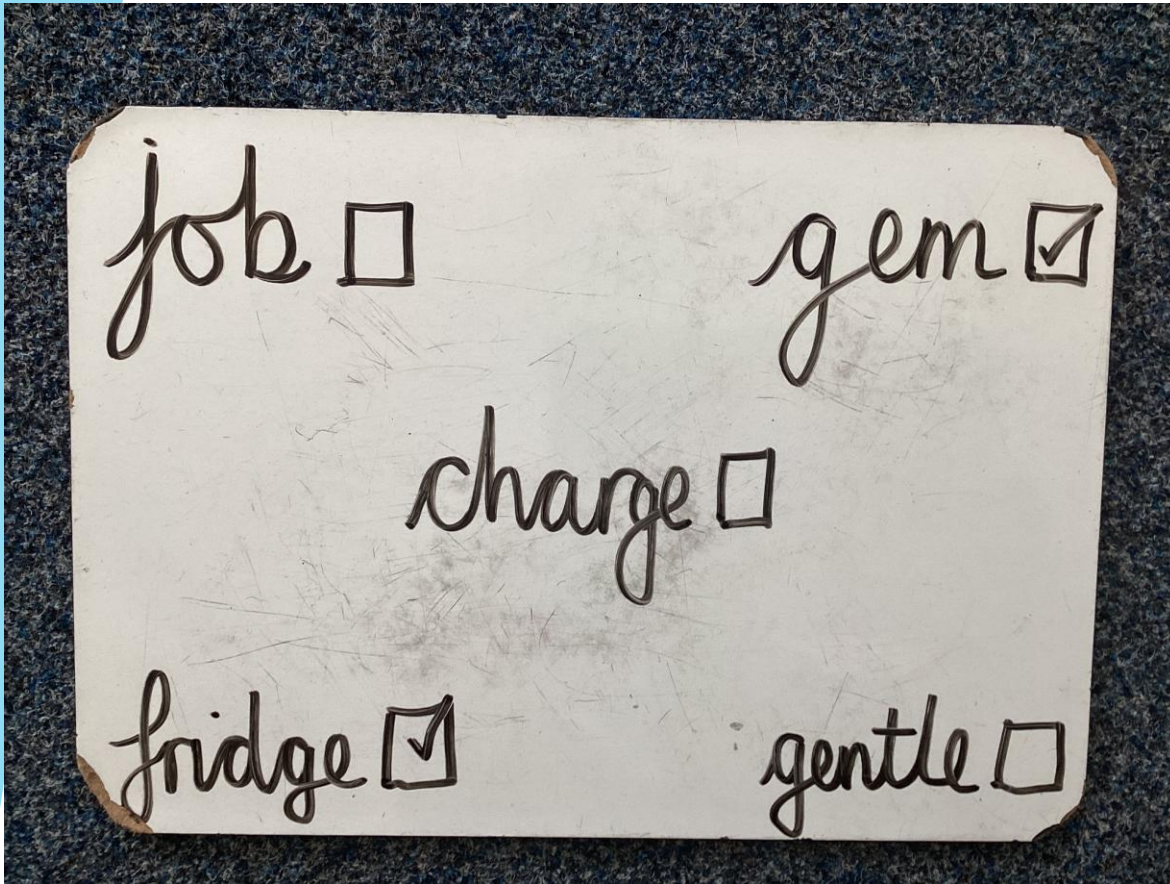


Matching Pairs - multiplayer

Have all spellings of the sound face down, turning two over at a time. If the spelling matches, keep it.



Examples of Phonics Games You Can Play



Word Bingo - multiplayer

Make words cards for 12 words. Your child copies 5 of them. Pull the words out of a hat/pot - the first to get their 5 words wins.



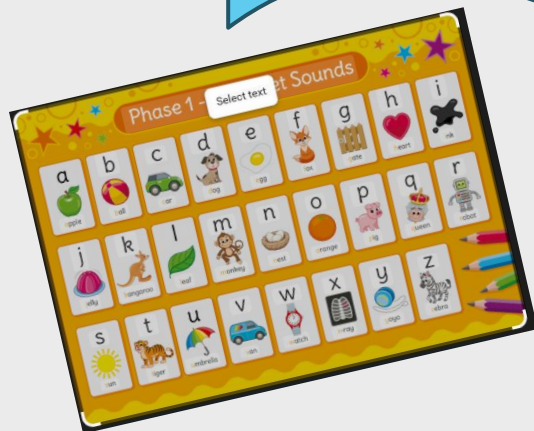
Treasure or Trash - single or multiplayer

Have a mix of real and unreal words. Sort them into treasure for real words and trash for unreal words.



RUDYARD KIPLING
Primary School & Nursery,
Woodingdean

**There will be a Phonics
Workshop for parents and
carers on Wednesday 21st
January at 2.30pm.**



The workshop will
explain more about
Phonics and how to
play these and
other games.



RUDYARD KIPLING
Primary School & Nursery,
Woodingdean



**Reading
volunteers
needed!**





RUDYARD KIPLING
Primary School & Nursery,
Woodingdean



**Forest
School
volunteers
needed!**





RUDYARD KIPLING
Primary School & Nursery,
Woodingdean

**Any
questions?**