



# Classroom Connect



## Spring Term



### Kahlo Class



Meet the adults in  
Kahlo class



Miss Wiseman



Miss King  
Learning Support  
Assistant & Cleaner



Miss Whyte  
Learning Support Assistant



Mrs Hollingsworth  
Learning Support  
Assistant



RUDYARD KIPLING

Primary School & Nursery,  
Woodingdean

Today, we will talk about:

- Routines, timetables and any other parent/carers information
- Year group, class and home-school learning information
- Questions at the end



# Rudyard Kipling Primary School & Nursery

## Our School Uniform

The children look so smart - thank you.



Our school uniform is available on our Website and is:

- Plain grey skirt, pinafore dress, grey smart tailored trousers
- Navy sweatshirt, fleece with school logo - available from school
- Navy polo shirt with logo - available from school
- Securely fastening black or navy shoes  
-Velcro fastenings only in Reception Class

In warmer weather the following may be worn:

- Navy & white striped or checked dress
- Plain grey tailored shorts
- Secure fastening sandals



Now it's so chilly outside...





RUDYARD KIPLING  
Primary School & Nursery,  
Woodingdean

# PE Days



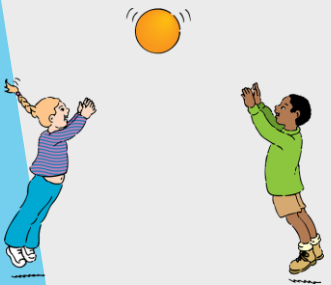
Kahlo Class PE days are  
**Wednesday**

## P.E.

All children need to have a PE kit. This is made up of the school navy PE t-shirt, dark shorts or navy joggers and plimsolls/trainers. However your children are welcome to wear a plain navy t-shirt.



All clothes and possessions should be carefully marked with the child's full name- permanent marker pens are perfect or see Stikins label flyer on our website.







RUDYARD KIPLING  
Primary School & Nursery,  
Woodingdean

# Forest School



Kahlo Forest School  
will be once a week  
next half term.



RUDYARD KIPLING  
Primary School & Nursery,  
Woodingdean

# Special Mentions



Special Mentions assemblies are every Friday after Rock Up and Read.



You will receive an Arbor notification on the Friday before.

You will also receive an Arbor notification for Merit Star and Maths Mission Awards on the Friday before.





RUDYARD KIPLING  
Primary School & Nursery,  
Woodingdean

# Rock Up And Read

Every Friday at 8:40-9:00







RUDYARD KIPLING  
Primary School & Nursery,  
Woodingdean

# Parent Newsletters

Friday 19<sup>th</sup> December 2025

Issue 25-26 15

## Headteacher Reports:

What a magical last couple of weeks it has been!

Last Saturday's PTFA Christmas Light Trail was something to behold. Father Christmas grotto, fun crafting stations, toasting marshmallows in Forest School, amazing story reading by Jesse's mum, Kelly. I could go on! And all for the princely sum of...£7 a ticket! This was an inclusive event that will not be forgotten by anyone who attended. There are far too many people to thank so I won't even try but you know who you are.

The long Rudyard history of plays and productions proudly continues. I've just counted up that we put on 17 different performances/events this fortnight: from Nursery 'Craftermoons' through to the choir singing at one of our local care homes. Memories of most of these special events can be seen on our school 'Instagram' page so do take a look at your leisure.

Yesterday afternoon, we were treated to a special performance from our 25 strong RKPS choir. Those parents who came along will vouch for just how high quality the singing was, it was so very impressive.

We are only able to provide our children and whole school community with such high quality experiences because of the excellence of our whole staff team. From the cooks feeding us delicious food to the cleaning team who make our school shine through to the adults nurturing and teaching our children-a more dedicated group of adults you will not find.

I would like to thank each and every adult who works their socks off to provide our amazing children with myriad memorable school experiences, ensuring that learning is an adventure.

Finally, I would like to thank you all for lending us your incredible children for 6 and a half hours a day: every child is unique and talented in their own individual way.

We are all rather proud of our local authority community school, thank you for the part you play in its success.

Wishing you all a very Merry Christmas and we look forward to seeing everyone again on Monday January 5<sup>th</sup>.

Merry Christmas!

Euan Hainington

Headteacher



RKPS Choir

## School Notices

### Wescott Thursdays

The next Wescott Thursday (8<sup>th</sup> January) will be Year Y4.

### Forest School with Mr Wescott

Tuesday 6<sup>th</sup> January - Year 5 Seacole AM

Tuesday 6<sup>th</sup> January - Year 2 Parks PM

Wednesday 7<sup>th</sup> January - Year 4 Mandela AM

Wednesday 7<sup>th</sup> January - Year 4 Pankhurst PM

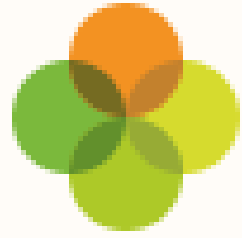
Thursday 8<sup>th</sup> January - Year 4 Franklin PM



## Dates for the Diary

January 26	
Monday 5 <sup>th</sup>	START OF TERM (children return)
Monday 12 <sup>th</sup>	Nursery S&L session (9:00am-10:00am)
Thursday 15 <sup>th</sup>	Year 4 Franklin - Farm School
Friday 16 <sup>th</sup>	Year 5 Soundmakers starts





Arbor

- Letters and admin
- Bookings

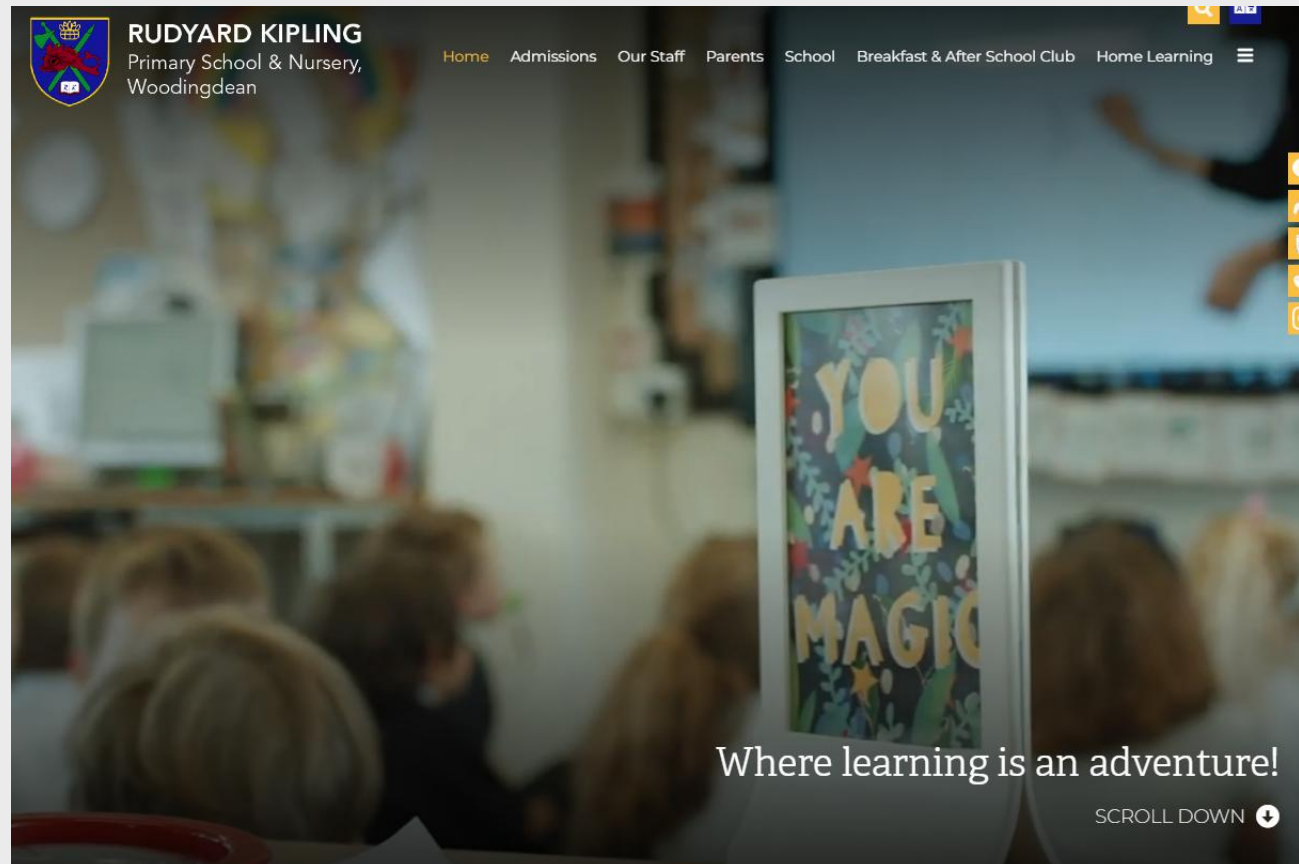
We no longer  
use Ping!



**RUDYARD KIPLING**  
Primary School & Nursery,  
Woodingdean

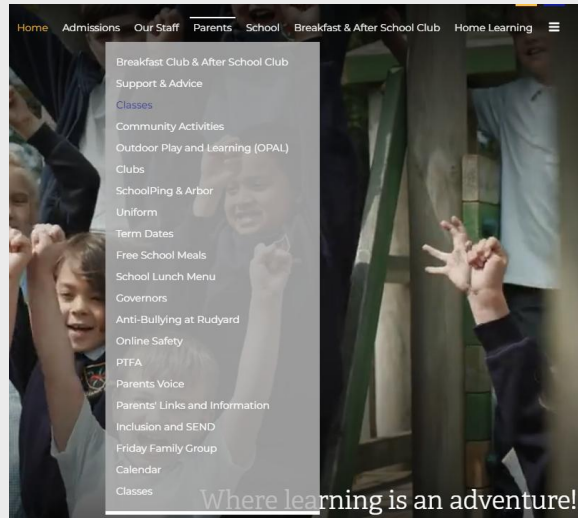
# School Website

<https://www.rudyardkiplingprimary.co.uk/>

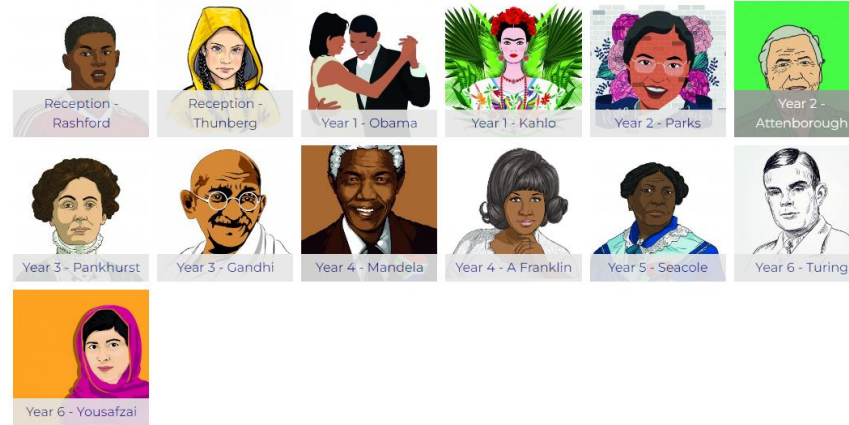




# Class Page



## Classes



## Year 1

Kahlo



### TEACHER PROFILE

Name: Miss Wiseman

Hello, I'm Miss Wiseman and I am the Year 1 teacher for Kahlo Class. I enjoy travel, reading and trying all of Brighton's best local restaurants! I am delighted to be joining the Rudyard Kipling family, and I can't wait to be a part of Year 1.





# Curriculum Map

## English

### Book studies:

- Winter Sleep
- Rapunzel
- Where the wild things are
- Non fiction texts about castles

## Art/ Design Technology

- Join materials to make a 3d model of a castle.
- Create a block printing castle picture inspired by Paul Klee's Castle and Sun painting.
- Weaving

## Geography

- Identify the key features of a location in order to say whether it is a city, town, village, coastal or rural area.
- Ask and answer geographical questions (such as: What is this place like? What or who will I see in this place? What do people do in this place?).
- Use geographical language to refer to human and physical aspects of geography (beach coast, beach, city, town).
- Identify position of castles around the UK.

## Maths

- Place value within 20 and 50
- Addition and subtraction within 20
- Counting in 2s, 5s and 10s
- Measurement (length, height, mass, volume)

## Turrets and Tiaras Year 1



## Computing

- Online Safety
- Continue to develop mouse skill (click and drag)
- Continue to develop typing

## History

- Learning how things change over time
- Make simple timelines
- Identifying where and why castles were built
- Learning about the parts of a castle
- Learning about the jobs that people did in castles
- Learn a Medieval dance
- Fantastic finish – Medieval banquet

## Science

- Continue to work scientifically, asking questions, observing closely, identifying and classifying, performing simple tests, using observations and suggesting answers to questions, gathering and recording data in response to questions.
- Identify and name a variety of materials
- Investigate and describe the properties of different materials.

## Physical Education

- Gymnastics- apparatus work.
- Games skills with Sports Coach (Mr Hoad), PE specialist.

## PHSE

Going for Goals

Choosing a realistic goal

To discuss right from wrong

## Music

- To perform (singing, follow instructions, make and control sounds, imitate changes of pitch).
- Learn song: Into the Groove
- To be able to follow pulse and rhythm.
- To begin to learn simple songs on the glockenspiel.

## Religious Education

- Special books
- Easter story





**RUDYARD KIPLING**  
Primary School & Nursery,  
Woodingdean

# Kahlo Days for:

Computing: Friday



Library: Friday



**Dates: Phonics Workshop, Wednesday 21<sup>st</sup> January, 2.30pm**

**Upcoming trips - Castle workshop, Thursday 22<sup>nd</sup> January**  
**- Summer term trip - stay tuned!**





RUDYARD KIPLING  
Primary School & Nursery,  
Woodingdean



- Practise regularly
- Increase confidence
- Increase fluency
- Tackle challenges

Times Tables  
homework  
will be  
starting  
later this  
year.

First 3  
letters of  
surname

First 3  
letters of  
forename

Login: surnam  
surnam:@rkps.me  
Password: words123





# Reading

- Read your reading book 3 times a week
- Record this in your reading record
- Choose a reading for pleasure book
- Hand in your reading record weekly
- 3 reads = 1 raffle ticket drawn in Special Mentions assembly



RUDYARD KIPLING  
Primary School & Nursery,  
Woodingdean

How can I  
support my  
child with  
reading?

V

ocabulary



I

nfer



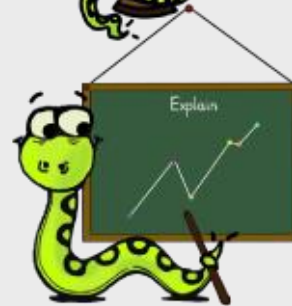
P

redict



E

xplain



R

etrieve



S

equence





# How can I support my child with spelling?

## Year 1 Words

### Year 1 Common Exception Words

the  
a  
do  
to  
today  
of  
said  
says  
are  
were  
was

is  
his  
has  
I  
you  
your  
they  
be  
he  
me  
she  
we

no  
go  
so  
by  
my  
here  
there  
where  
love  
come  
some

one  
once  
ask  
friend  
school  
put  
push  
pull  
full  
house  
our



# Phonics

Every 2 weeks, your child will be given a list of words that have our fortnightly sound. This will show how that sound is represented by different spellings.

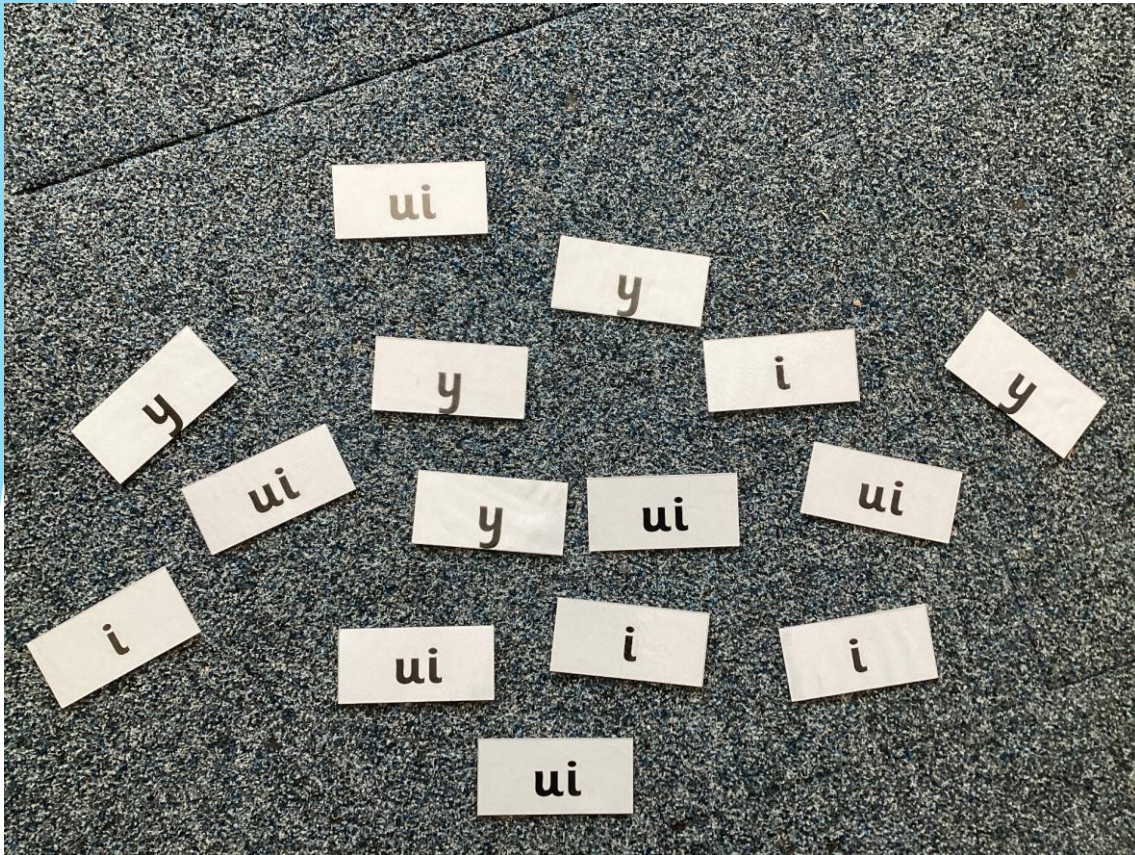
## Word List for the Sound /j/

j	g	ge	dge
job	gist	charge	fridge
jinx	germ	splurge	wedge
jolly	gentle	fringe	footbridge
jigsaw	German	plunge	porridge
junk	danger	challenge	badge
Jack	gem	age	judge
		large	



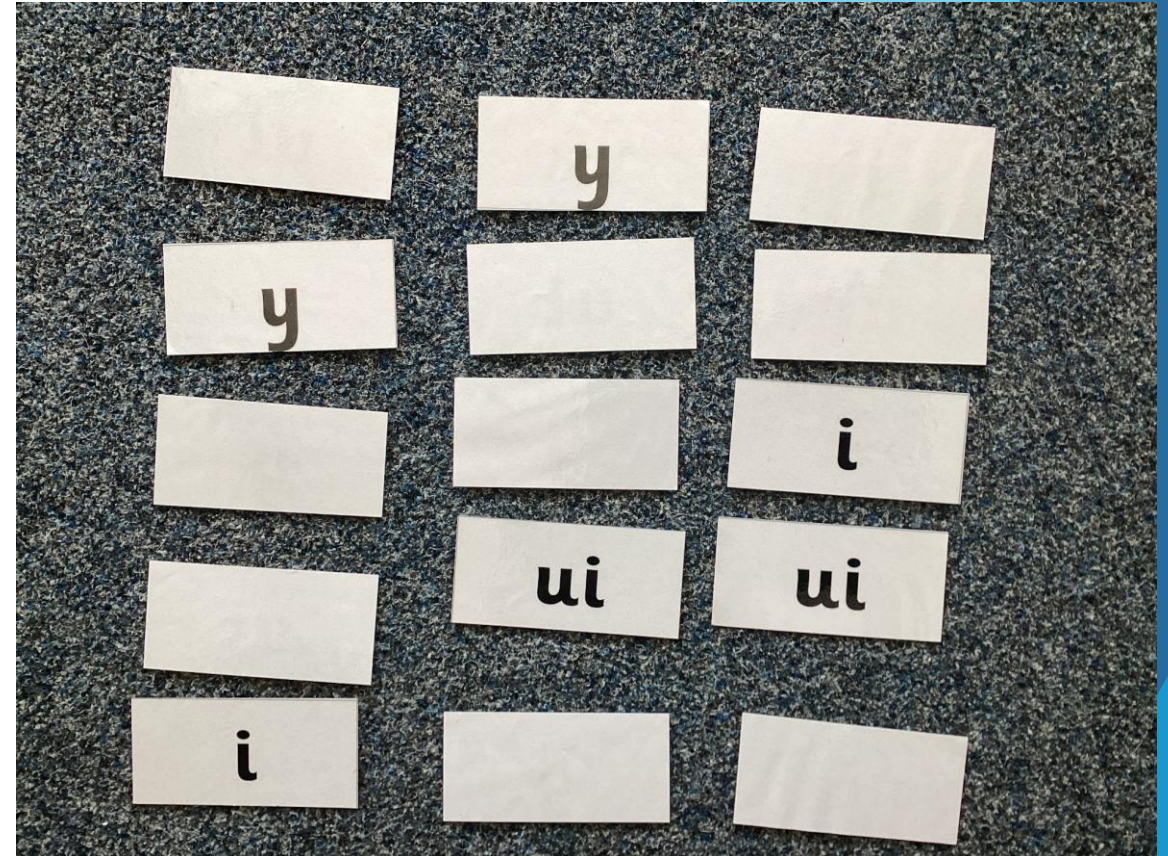


# Examples of Phonics Games You Can Play



## Spelling Word Hunt - single or multiplayer

Find all the one of the spellings as quickly as you can for that sound.



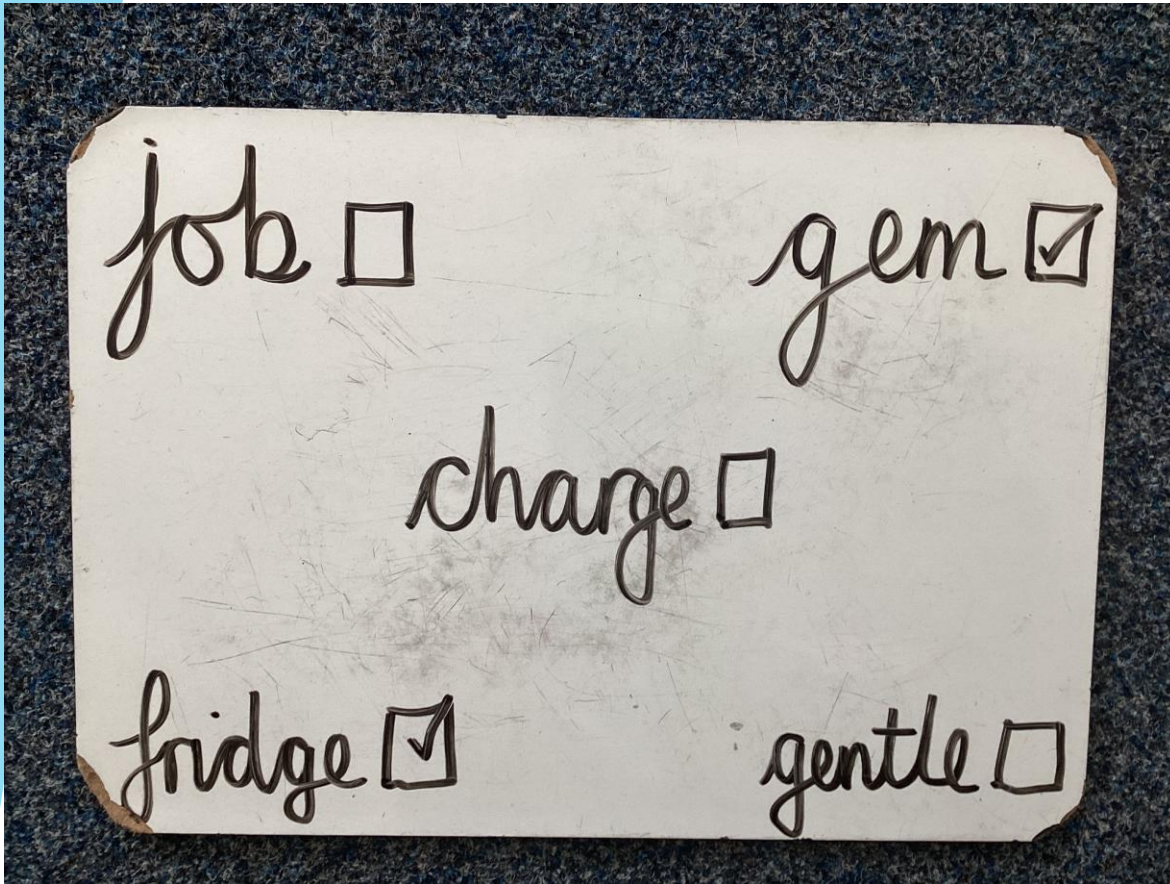
## Matching Pairs - multiplayer

Have all spellings of the sound face down, turning two over at a time. If the spelling matches, keep it.





# Examples of Phonics Games You Can Play



## Word Bingo - multiplayer

Make words cards for 12 words. Your child copies 5 of them. Pull the words out of a hat/pot - the first to get their 5 words wins.



## Treasure or Trash - single or multiplayer

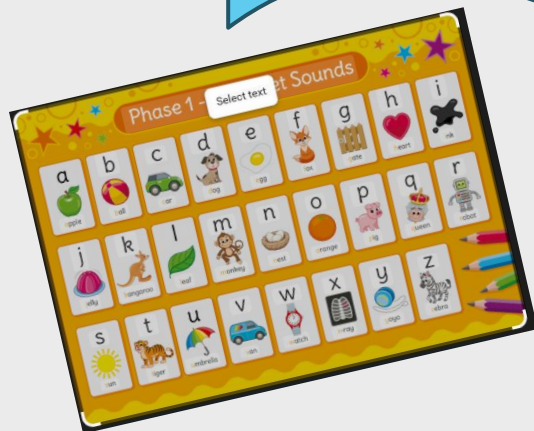
Have a mix of real and unreal words. Sort them into treasure for real words and trash for unreal words.





RUDYARD KIPLING  
Primary School & Nursery,  
Woodingdean

There will be a Phonics  
Workshop for parents and  
carers on Wednesday 21<sup>st</sup>  
January at 2.30pm.



The workshop will  
explain more about  
Phonics and how to  
play these and  
other games.

# Maths at Home



## Place Value:

- House numbers
- Shopping receipts
- Car number plates
- Prices
- TV channels



## Multiplication and Division:

- Times table recall
- Increasing recipes
- Packing: How many full boxes of 6 can we make?

## Addition and Subtraction:

- Adding prices when shopping.
- Calculating change when spending money.
- Adding or subtracting distances on a journey.



## Measures:

- Cooking: weighing ingredients
- Time: arrival times, length of travel, finishing times
- Length: measure items around the house or outside with a rule or tape measure



## Fractions, Decimals and Percentages:

- Sharing food
- Reading prices
- Measuring ingredients



## Geometry:

- Shape hunt at home and outside
- Building models
- Blindfolded directions
- Shape spot competitions
- Lego building



**RUDYARD KIPLING**  
Primary School & Nursery,  
Woodingdean



**Reading  
volunteers  
needed!**







**RUDYARD KIPLING**  
Primary School & Nursery,  
Woodingdean



**Forest  
School  
volunteers  
needed!**







**RUDYARD KIPLING**  
Primary School & Nursery,  
Woodingdean

**Any  
questions?**

**Thank you! 😊**